



Parks, Recreation & Libraries Department

**Section 6:
PARKS STANDARD DETAILS**

PARKS CONSTRUCTION STANDARDS

INDEX	2025 PARKS STANDARDS
IRRIGATION	
CONTROLLER	PK-IR-1
MASTER VALVE - CALSENSE	PK-IR-2
RECYCLED WATER FILTER	PK-IR-3
PIPE AT PAVEMENT	PK-IR-4
PIPE TRENCH	PK-IR-5
POP-UP ROTOR	PK-IR-6
POP-UP SPRAY	PK-IR-7
ROOT WATERING SYSTEM	PK-IR-8
THRUST BLOCK	PK-IR-9
VALVE – 3 INCH AND SMALLER	PK-IR-10
VALVE – 4 INCH AND LARGER	PK-IR-11
VALVE - DRIP CONTROL	PK-IR-12
VALVE - QUICK COUPLING	PK-IR-13
VALVE - REMOTE CONTROL AT GRADE	PK-IR-14
DRIP FLUSH VALVE AND OPERATION INDICATOR	PK-IR-15
TYPICAL DRIPLINE DRIPGRID REQUIREMENTS	PK-IR-16
LANDSCAPE	
GROUNDCOVER PLANTING	PK-LS-1
SHRUB PLANTING	PK-LS-2
SHRUB PLANTING ON SLOPES	PK-LS-3
TREE PLANTING	PK-LS-4
TREE PLANTING ON SLOPES	PK-LS-5
MISCELLANEOUS	
DRINKING FOUNTAIN	PK-MI-1
PICNIC TABLE AND BENCH INSTALLATION HEIGHTS	PK-MI-2
REDWOOD HEADER	PK-MI-3
KEYSTONE SEAT WALL/ RETAINING WALL	PK-MI-4
CONCRETE MOWBAND	PK-MI-5
PARK IDENTIFICATION SIGN	PK-MI-6
SECURITY LIGHT WITH CONCRETE COLLAR	PK-MI-7
PAVING	
ASPHALT CONCRETE PAVING	PK-PA-1
CONCRETE PAVING	PK-PA-2
CONCRETE JOINTS	PK-PA-3
DECOMPOSED GRANITE PAVING	PK-PA-4
PLAY AREAS	
PLAY AREA - ACCESS RAMP A	PK-PL-1
PLAY AREA - CONCRETE CURB	PK-PL-2
PLAY AREA - DRAIN	PK-PL-3
PLAY AREA - PERFORATED PIPE DRAIN	PK-PL-4

PARKS CONSTRUCTION STANDARDS

INDEX	2025 PARKS STANDARDS
BOLLARDS & FENCES (ACCESS RESTRICTIONS)	
STATIONARY BOLLARD	PK-BF-1
CHAIN LINK FENCE	PK-BF-2
POST AND CABLE FENCE	PK-BF-3
SPORTS FIELDS	
BALL FIELD LAYOUT	PK-SP-1
DUGOUT LAYOUT	PK-SP-2
INFIELD EDGE DRAIN AND WARNING TRACK	PK-SP-3
SIDELINE FENCE	PK-SP-4
SKINNED INFIELD IRRIGATION LAYOUT	PK-SP-5
VOLLEYBALL COURT LAYOUT	PK-SP-6
BASKETBALL COURT HALF COURT LAYOUT	PK-SP-7
DRAINAGE	
DRAIN INLETS IN TURF AREAS	PK-DR-1
DRAIN INLETS IN LANDSCAPE AREAS	PK-DR-2

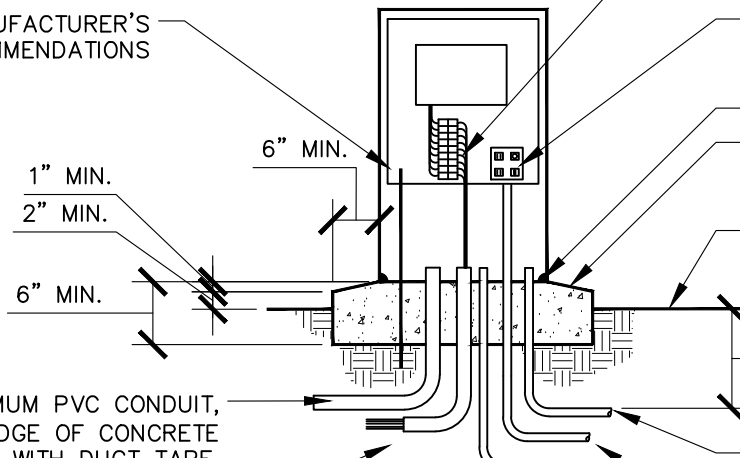
NOTES*

Bikeways:

1. Please visit the City of Roseville's Department of Development Services Construction Standard Details "BK 1 – 5" for information regarding bikeways.

AUTOMATIC SPRINKLER CONTROL UNIT,
 SECURE TO A VANDAL RESISTANT
 ENCLOSURE AND SECURE ENCLOSURE TO
 A CONCRETE PAD. SEE IRRIGATION LEGEND
 FOR MANUFACTURER AND MODEL NUMBER
 OF CONTROLLER AND ENCLOSURE.

INSTALL GROUNDING ROD PER MANUFACTURER'S
 RECOMMENDATIONS



CONNECT CONTROL AND COMMON WIRES
 TO TERMINAL STRIPS IN ENCLOSURE.
 LEAVE ENOUGH EXCESS WIRE TO ALLOW
 FOR EXPANSION LOOP. WIRE SHOULD
 REACH THE TOP OF THE ENCLOSURE.

ON-OFF SWITCH AND 120 VOLT GFI
 WEATHERPROOF OUTLET. (LOCATE
 INSIDE ENCLOSURE)

ALL WEATHER FOAM SEALANT

CONCRETE FOOTING, INSTALL ABOVE
 GRADE, SLOPE TOP TO DRAIN AT
 A MINIMUM OF 2%.

FINISH GRADE

DEPTH OF CONDUIT
 PER LOCAL CODE

PROVIDE SPARE 3" DIA. MINIMUM PVC CONDUIT,
 EXTEND 6" BEYOND EDGE OF CONCRETE
 PAD. SEAL END WITH DUCT TAPE.

PROVIDE 3" DIA. MINIMUM PVC CONDUIT FOR WIRES.
 EXTEND 6" BEYOND EDGE OF CONCRETE PAD.

ELECTRICAL CONDUIT PER CODE TO POWER SOURCE

PROVIDE 3/4" DIA. MINIMUM PVC CONDUIT FOR
 MASTER VALVE AND FLOW SENSOR WIRES


PROVIDE 3/4" DIA. MINIMUM PVC CONDUIT FOR
 PUMP CONTROL WIRES

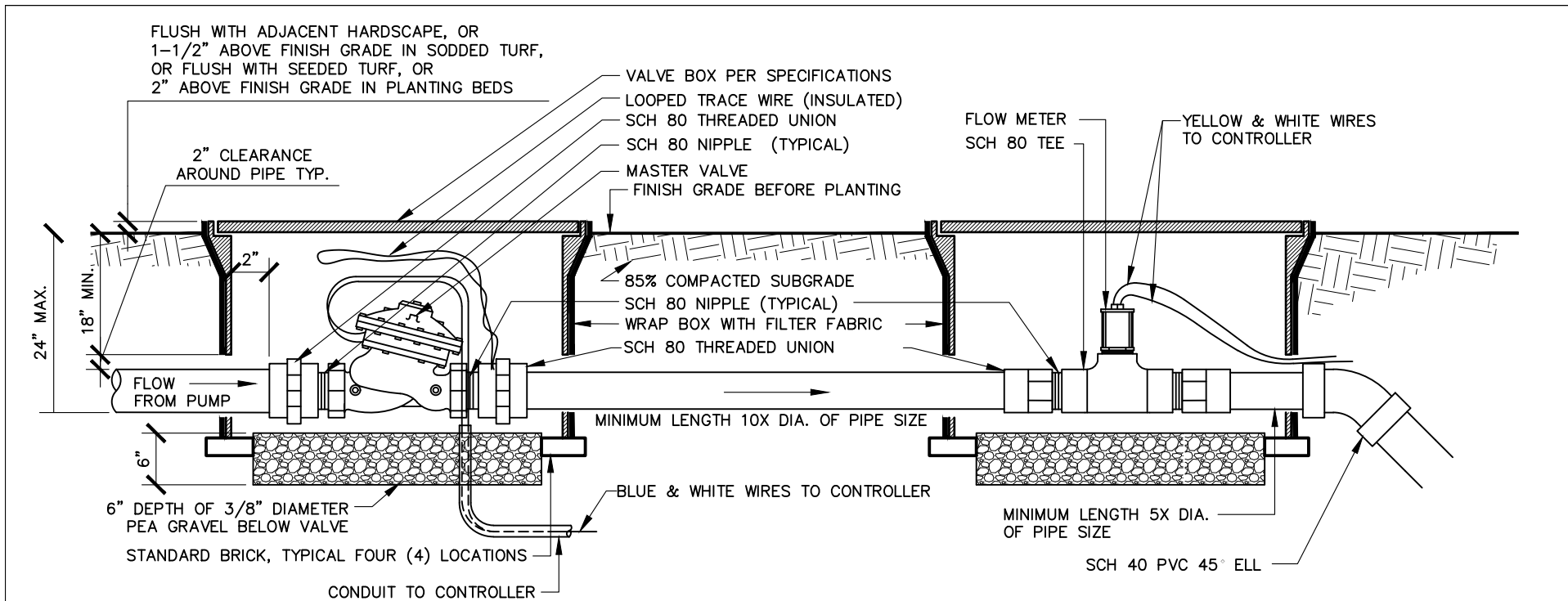
Jill Geller

JILL GELLER, CPRE
 PARKS, RECREATION & LIBRARIES DIRECTOR

NOTES

1. COMMON WIRE TO BE WHITE & CONTROL WIRE TO BE RED IN COLOR. BUNDLE AND TAPE AT INTERVALS OF 10 FT. O. C.
2. NO SPLICES SHALL BE MADE BETWEEN CONTROLLER AND REMOTE CONTROL VALVES UNDER 500 LINEAL FEET.
3. ORDER WITH MANUFACTURER'S FACTORY FINISH STAINLESS STEEL.
4. INSULATE AROUND INSIDE BASE OF BOX WITH ALL WEATHER FOAM SEALANT.
5. GROUNDING ROD SHALL BE INSTALLED PER MANUFACTURER'S RECOMMENDATIONS..
6. GROUND TEST TO BE CONDUCTED AFTER INSTALLATION, NOT TO EXCEED 25 OHMS.
7. MASTER VALVE WIRE SHALL BE BLUE.
8. PROVIDE COLOR CODED MAP OF VALVE LOCATIONS.
9. EXTEND PAVING 24" AT FRONT OF CONTROLLER TO ALLOW FOR CLEAR ACCESS.

	PARKS, RECREATION, & LIBRARIES DEPARTMENT
<h1>CONTROLLER</h1>	
SCALE: NONE REVISED: JULY 2025 REVIEWED BY: T. GEE APPROVED BY: J. GELLER	<h2>PK-IR-1</h2>



Jill Geller

JILL GELLER, CPRE
 PARKS, RECREATION & LIBRARIES DIRECTOR

CITY OF **ROSEVILLE** CALIFORNIA
 PARKS, RECREATION, & LIBRARIES DEPARTMENT

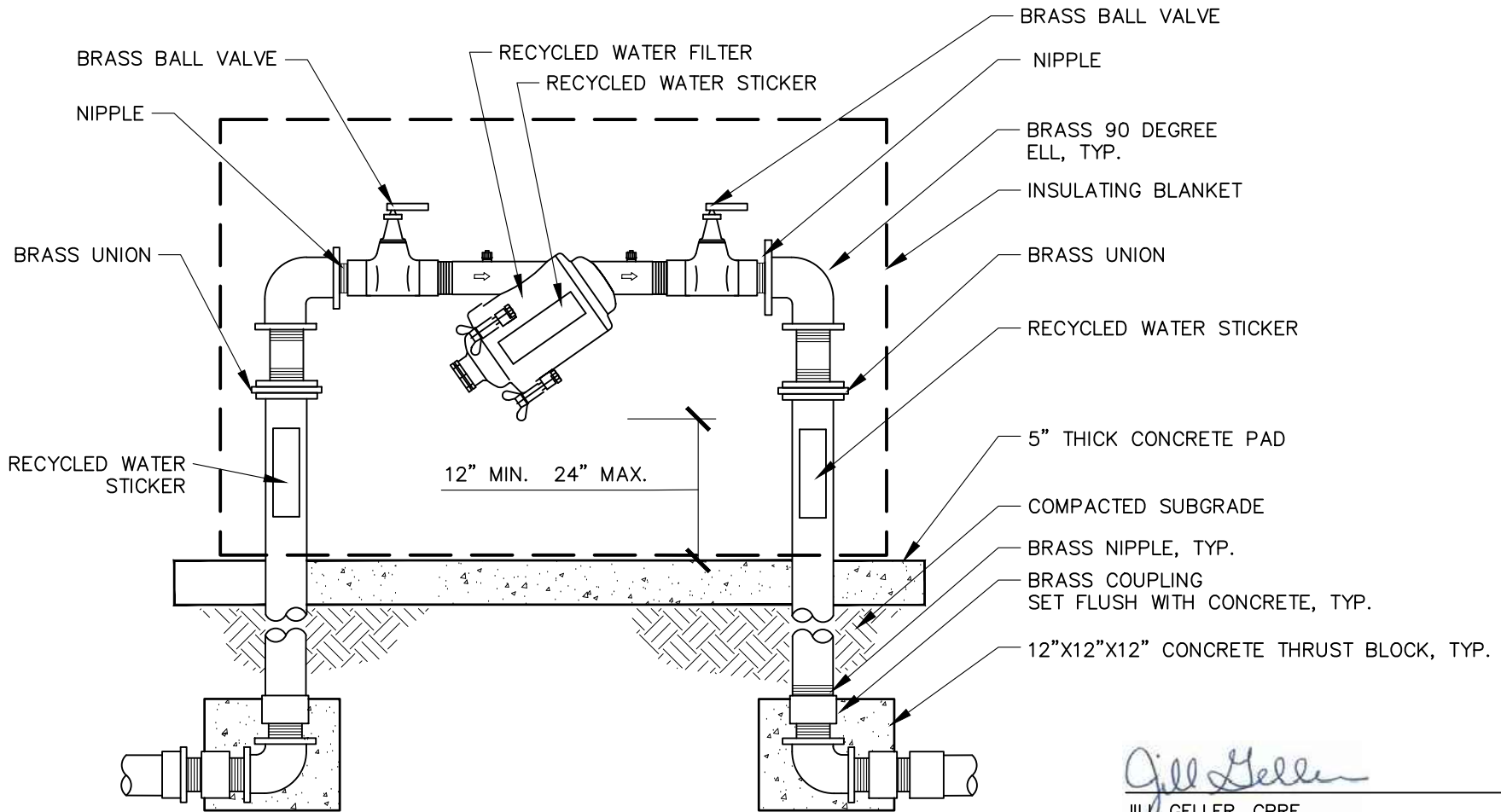
**MASTER VALVE
 CALSENSE**

SCALE: NONE
 REVISED: JULY 2025
 REVIEWED BY: T. GEE
 APPROVED BY: J. GELLER

PK-IR-2

NOTES

1. INSTALL VALVES A MINIMUM OF 12" FROM STRUCTURES OR HARDSCAPING.
2. INSTALL VALVES IN PLANTER BEDS WHEREVER POSSIBLE.
3. PLACE VALVE BOX AT RIGHT ANGLES TO STRUCTURES OR HARDSCAPING.
4. INSTALL VALVE BOX SO THAT TOP OF BOX IS FLUSH WITH ADJACENT HARDSCAPING.
5. USE TEFLON TAPE ON ALL MALE THREADS.
6. INSULATE AROUND PIPE AT BOX OPENINGS WITH PLASTIC SHEETING TO PREVENT SOIL FROM ENTERING BOX.
7. REFER TO SPECIFICATIONS FOR REQUIREMENTS FOR TAPING, EXPANSION COILS, WIRE CONNECTIONS, ETC.
8. FOR USE WITH CALSENSE CONTROLLERS ONLY.



Jill Geller

JILL GELLER, CPRE
 PARKS, RECREATION & LIBRARIES DIRECTOR

	PARKS, RECREATION, & LIBRARIES DEPARTMENT
---	--

RECYCLED WATER FILTER

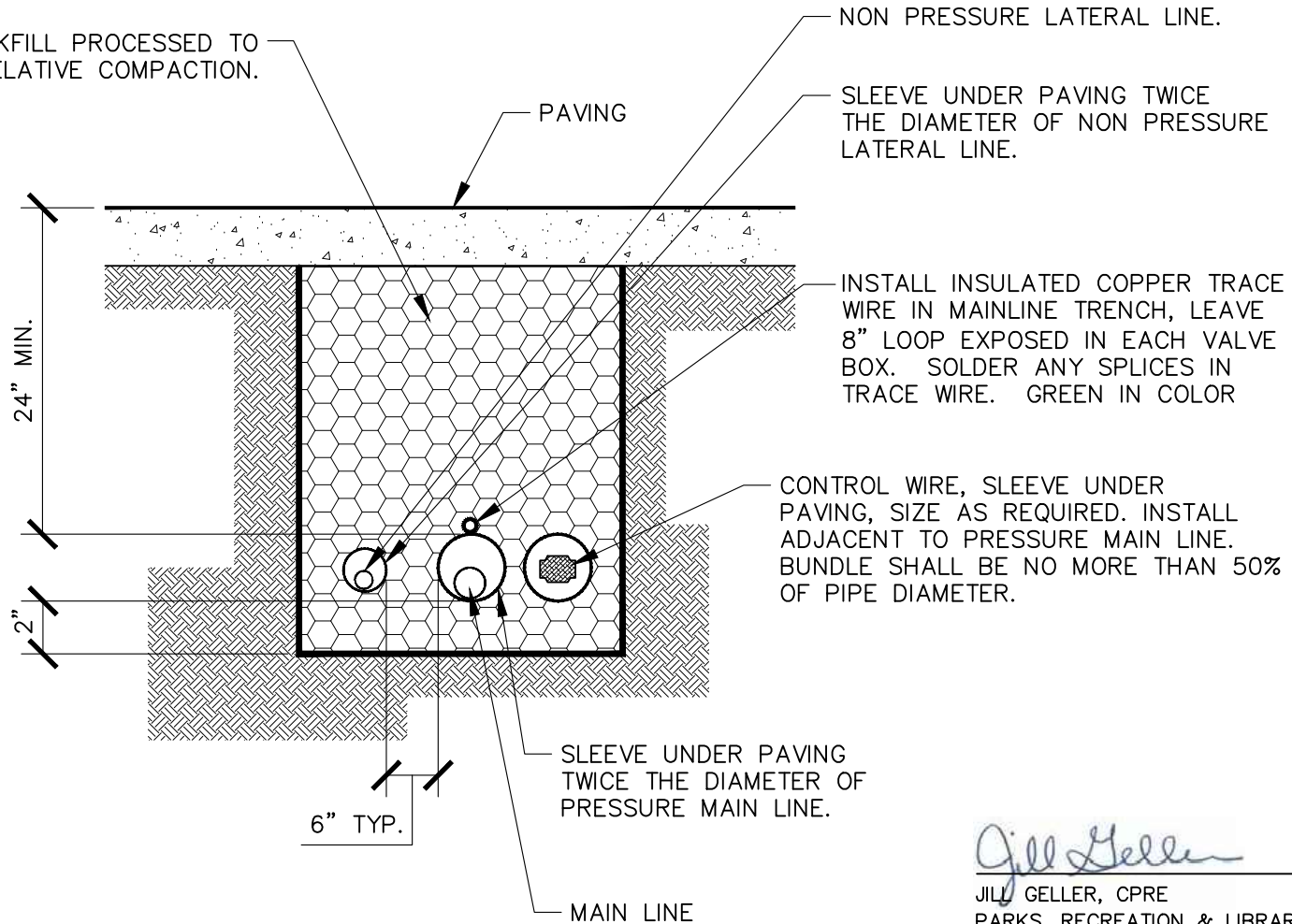
SCALE: NONE
 REVISED: JULY 2025
 REVIEWED BY: T. GEE
 APPROVED BY: J. GELLER

PK-IR-3

NOTES

1. USE TEFLON TAPE ON ALL THREADED FITTINGS.
2. LOCATE IN SHRUB/GROUNDCOVER AREA WHENEVER POSSIBLE.
3. PROVIDE INSULATING BLANKET OVER RECYCLED WATER FILTER.
4. PIPE AND FITTINGS 3" OR SMALLER SHALL BE BRASS; 4" OR LARGER SHALL BE DUCTILE IRON.
5. RECYCLED WATER STICKERS SHALL BE PURPLE AND SHALL READ "RECYCLED WATER – DO NOT DRINK"

1" MINUS BACKFILL PROCESSED TO 95% RELATIVE COMPACTION.



Jill Geller

JILL GELLER, CPRE
PARKS, RECREATION & LIBRARIES DIRECTOR



PARKS, RECREATION, & LIBRARIES
DEPARTMENT

NOTES

1. ALL SLEEVES TO BE SCHEDULE 40 PVC.
2. EXTEND ALL SLEEVES 12" BEYOND EDGE OF HARDSCAPING.
3. CAP BOTH ENDS OF ALL SPARE SLEEVES AND MARK BOTH ENDS WITH 3M LOCATOR BALLS.
4. INSTALL SPARE SLEEVE UNDER ROADWAYS

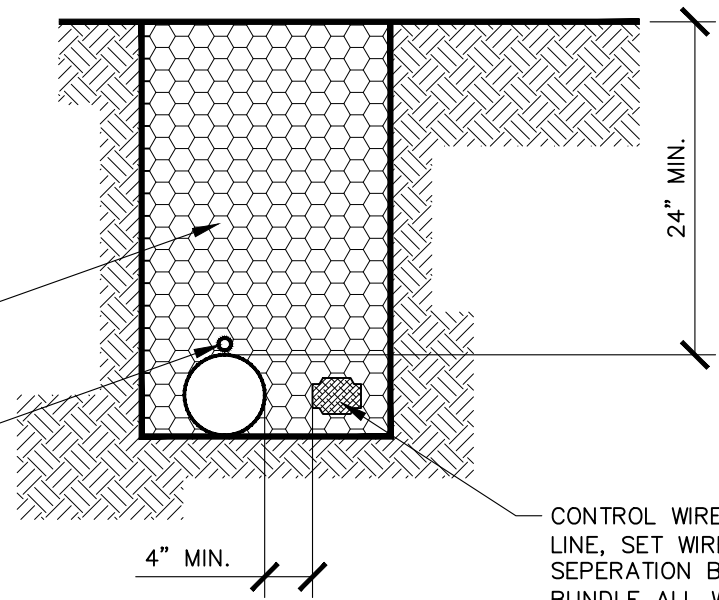
PIPE AT PAVEMENT

SCALE: NONE
REVISED: JULY 2025
REVIEWED BY: T. GEE
APPROVED BY: J. GELLER

PK-IR-4

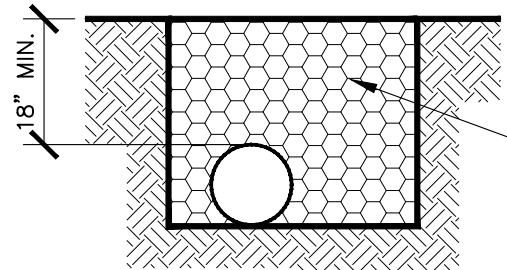
1" MINUS BACKFILL PROCESSED TO 95% RELATIVE COMPACTION

INSTALL INSULATED COPPER TRACE WIRE IN MAINLINE TRENCH, LEAVE 8" LOOP EXPOSED IN EACH VALVE BOX. SOLDER ANY SPLICES IN TRACE WIRE. GREEN IN COLOR



CONTROL WIRES. BACKFILL HALF DIAMETER OF MAIN LINE, SET WIRES ADJACENT AND MAINTAIN A MINIMUM 4" SEPERATION BETWEEN CONTROL WIRES AND MAIN LINE. BUNDLE ALL WIRES TOGETHER AND TAPE AT 10' INTERVALS.

PRESSURE MAIN LINE



1" MINUS BACKFILL PROCESSED TO 95% RELATIVE COMPACTION

NON PRESSURE LATERAL

Jill Geller

JILL GELLER, CPRE
PARKS, RECREATION & LIBRARIES DIRECTOR

	PARKS, RECREATION, & LIBRARIES DEPARTMENT
---	--

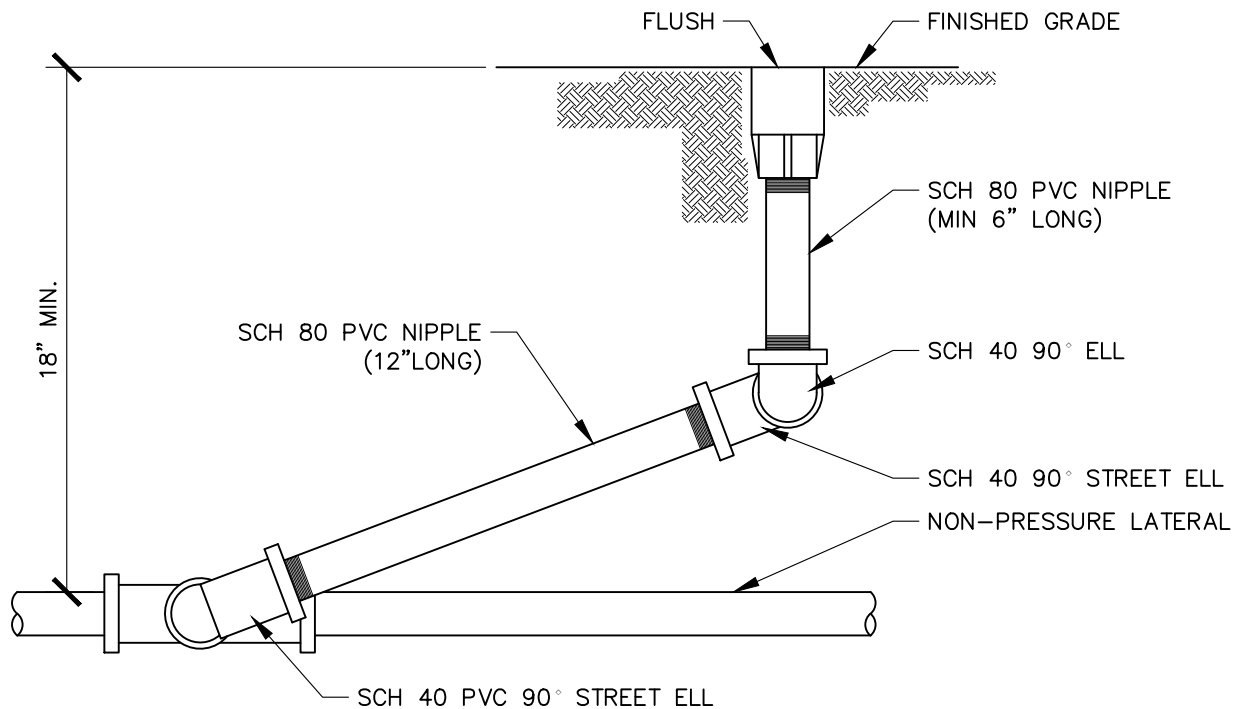
PIPE TRENCH

SCALE: NONE
 REVISED: JULY 2025
 REVIEWED BY: T. GEE
 APPROVED BY: J. GELLER

PK-IR-5

NOTES

1. RECLAIMED WATER REQUIRES BURIED TAPE LINE PER PUBLIC WORKS CONSTRUCTION STANDARDS.



Jill Geller

JILL GELLER, CPRE
 PARKS, RECREATION & LIBRARIES DIRECTOR



PARKS, RECREATION, & LIBRARIES
 DEPARTMENT

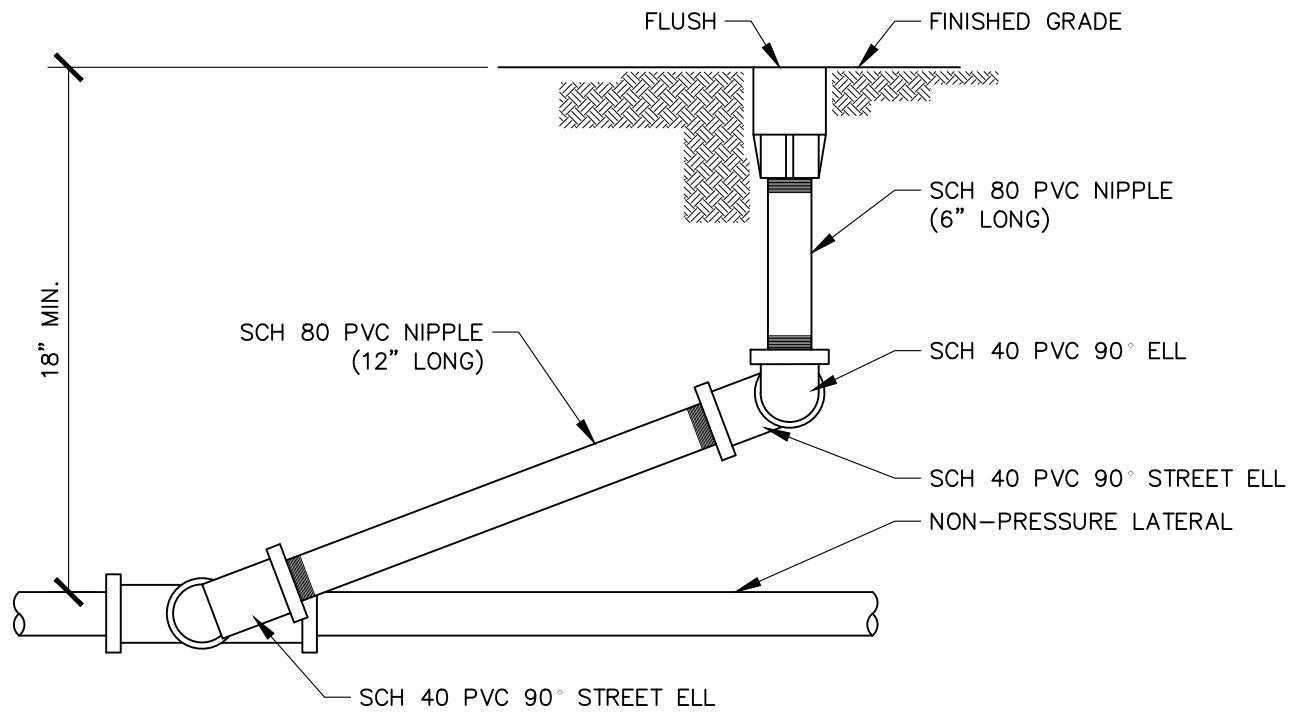
POP-UP ROTOR

SCALE: NONE
 REVISED: JULY 2025
 REVIEWED BY: T. GEE
 APPROVED BY: J. GELLER

PK-IR-6

NOTES

1. LOCATE HEAD 2" FROM WALKS, CURBS, HARDSCAPING, MOW STRIPS, AND HEADER BOARDS, OR AS REQUIRED BY CURRENT WELO REGULATIONS.
2. LOCATE HEAD 12" FROM ALL STRUCTURES.
3. USE TEFLON TAPE ON ALL THREADED FITTINGS. DO NOT USE MARLEX FITTINGS.
4. SWING JOINT ASSEMBLY PIPE SIZE MUST MATCH INLET SIZE OF SPRINKLER.
5. PREFABRICATED SWING JOINTS ARE ALLOWED, UPON APPROVAL.



Jill Geller

JILL GELLER, CPRE
 PARKS, RECREATION & LIBRARIES DIRECTOR

CITY OF ROSEVILLE CALIFORNIA
 PARKS, RECREATION, & LIBRARIES DEPARTMENT

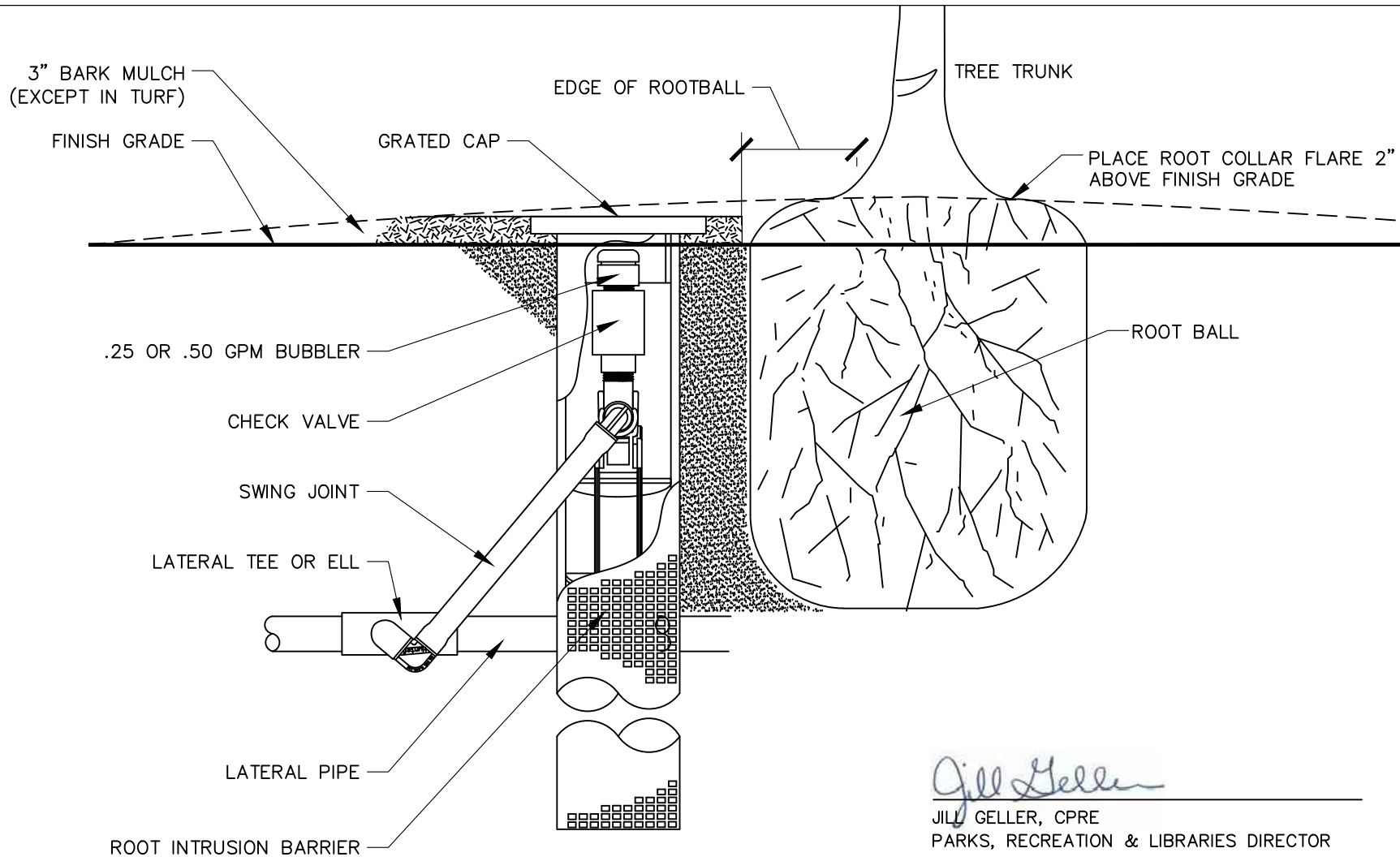
POP-UP SPRAY

SCALE: NONE
 REVISED: JULY 2025
 REVIEWED BY: T. GEE
 APPROVED BY: J. GELLER

PK-IR-7

NOTES

1. LOCATE SPRAY HEAD 24" FROM WALKS, CURBS, HARDSCAPING, MOW STRIPS, AND HEADER BOARDS, OR AS REQUIRED BY CURRENT WELO REGULATIONS.
2. LOCATE SPRAY HEADS 12" FROM WALKS, CURBS, HARDSCAPING, MOW STRIPS, AND HEADER BOARDS WHEN PLACED IN TURF AREAS.
3. LOCATE SPRAY HEADS 12" FROM ALL STRUCTURES IN TURF AREAS AND 6" FROM ALL STRUCTURES IN GROUND-COVER AREAS.
4. USE TEFLON TAPE ON ALL THREADED FITTINGS. DO NOT USE MARLEX FITTINGS.
5. PREFABRICATED SWING JOINT ARE ALLOWED, UPON APPROVAL.
6. 6" LONG SCH 80 PVC RISER NIPPLE NOT REQUIRED FOR 12" POPUP HEADS.



NOTE

1. INSTALL FILTER FABRIC SLEEVE
2. SEE PLANS AND SPECS FOR APPROVED MANUFACTURERS AND MODEL NUMBERS

Jill Geller

JILL GELLER, CPRE
 PARKS, RECREATION & LIBRARIES DIRECTOR

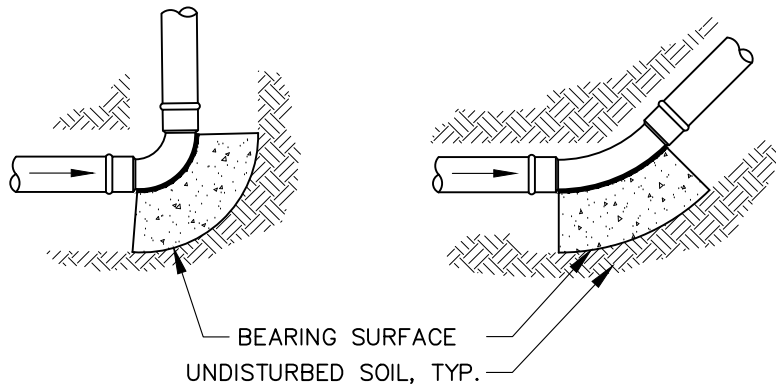
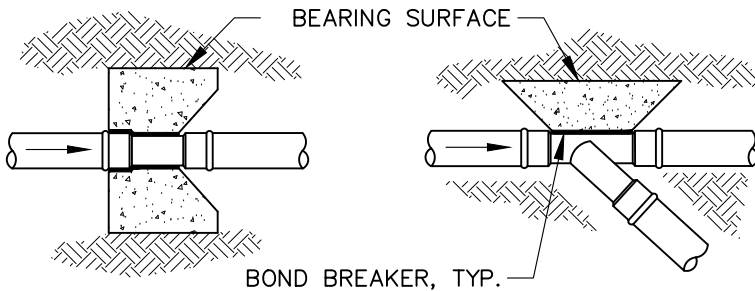
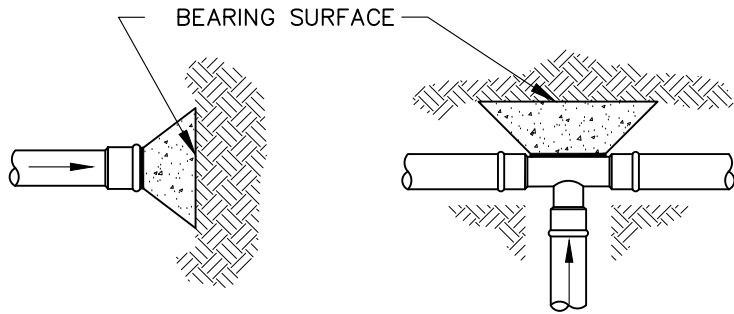


PARKS, RECREATION, & LIBRARIES
 DEPARTMENT

ROOT WATERING SYSTEM

SCALE: NONE
 REVISED: JULY 2025
 REVIEWED BY: T. GEE
 APPROVED BY: J. GELLER

PK-IR-8



MINIMUM BEARING SURFACE AREA

PIPE SIZE	TEE AND PLUG	90 DEGREE BEND	45 DEGREE BEND
1-1/2"	0.45 SQ. FT.	0.63 SQ. FT.	0.34 SQ. FT.
2"	0.69 SQ. FT.	0.97 SQ. FT.	0.53 SQ. FT.
2-1/2"	1.0 SQ. FT.	1.41 SQ. FT.	0.77 SQ. FT.
3"	1.48 SQ. FT.	2.10 SQ. FT.	1.14 SQ. FT.
4"	2.43 SQ. FT.	3.45 SQ. FT.	1.87 SQ. FT.
6"	5.25 SQ. FT.	7.41 SQ. FT.	4.02 SQ. FT.
8"	9.08 SQ. FT.	12.83 SQ. FT.	6.96 SQ. FT.
10"	14.93 SQ. FT.	21.07 SQ. FT.	11.44 SQ. FT.

Jill Geller

JILL GELLER, CPRE
PARKS, RECREATION & LIBRARIES DIRECTOR



PARKS, RECREATION, & LIBRARIES
DEPARTMENT

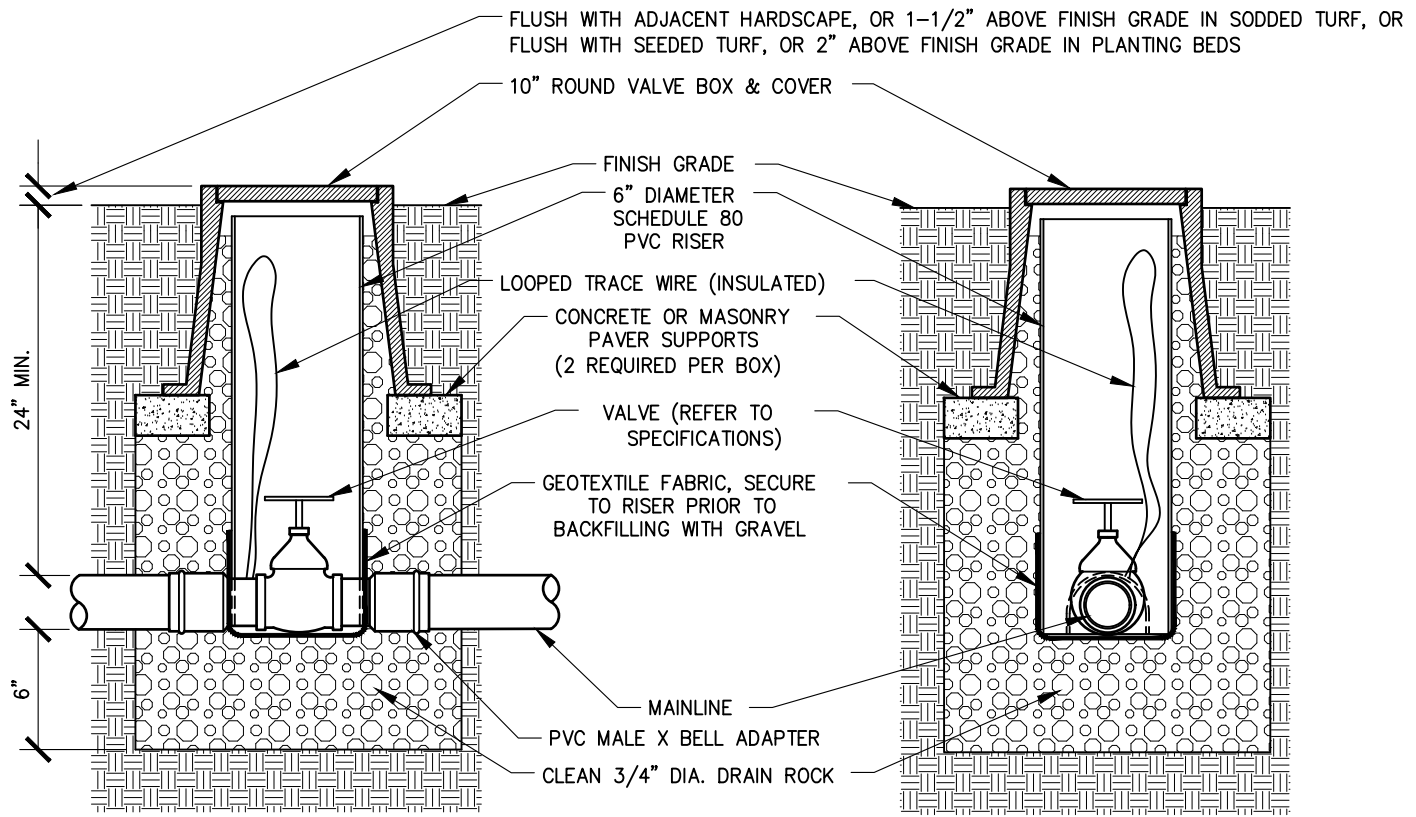
THRUST BLOCKS

SCALE: NONE
REVISED: JULY 2025
REVIEWED BY: T. GEE
APPROVED BY: J. GELLER

PK-IR-9

NOTES

1. SIZE THRUST BLOCKS AS SPECIFIED ABOVE.
2. DO NOT ENCASE CONTROL WIRES IN THE CONCRETE.
3. ALL FITTINGS MUST BE WRAPPED WITH POLYETHYLENE TO PREVENT CONCRETE FROM ADHERING TO BOLTS OR PIPES.
4. JOINTS AND BOLTS SHALL BE ACCESSIBLE FOR REPAIRS.



Jill Geller

JILL GELLER, CPRE
 PARKS, RECREATION & LIBRARIES DIRECTOR

	PARKS, RECREATION, & LIBRARIES DEPARTMENT
---	--

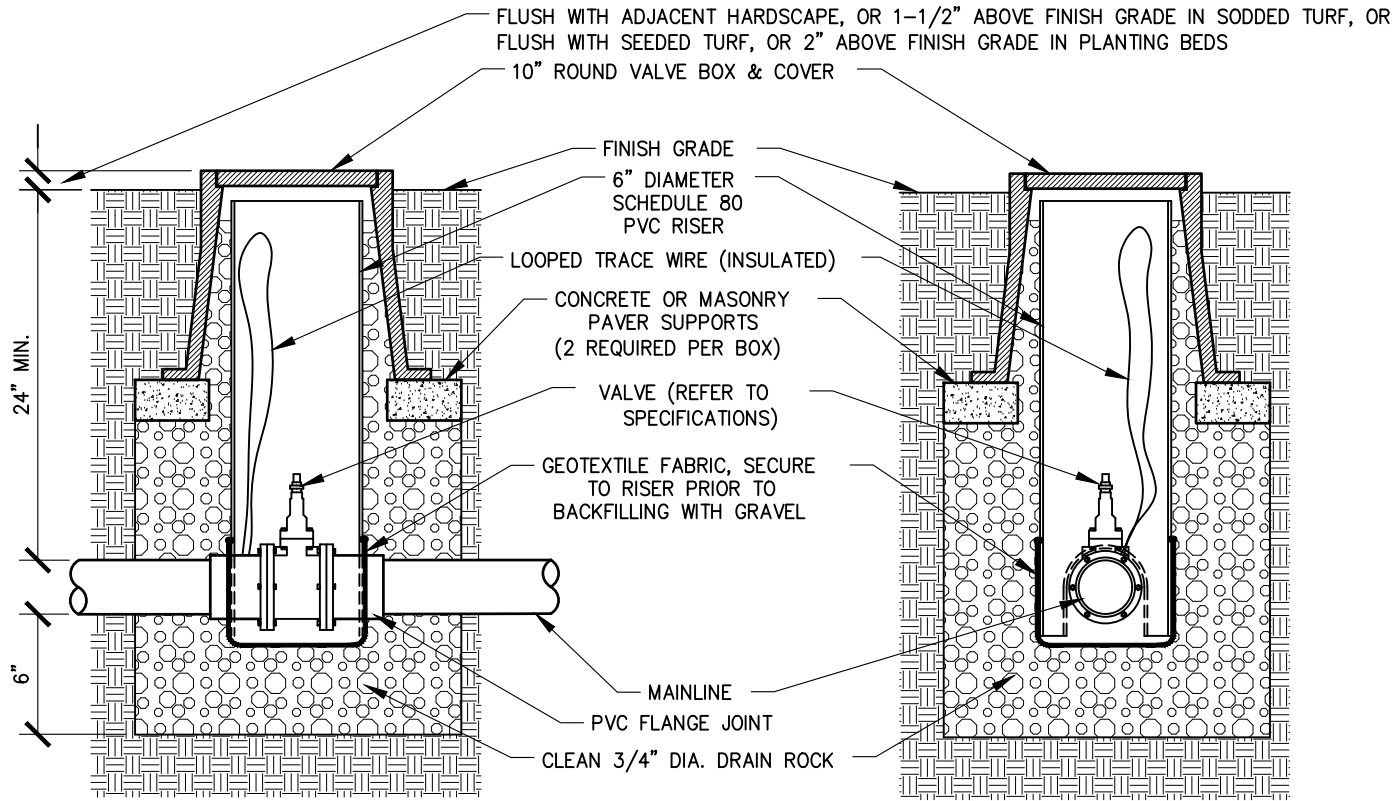
**VALVE 3 INCH AND
 SMALLER**

SCALE: NONE
 REVISED: JULY 2025
 REVIEWED BY: T. GEE
 APPROVED BY: J. GELLER

PK-IR-10

NOTES

1. COMPACT SOIL AROUND BOX TO 90% MINIMUM COMPACTION.
2. PLACE DRAIN ROCK PRIOR TO INSTALLING VALVE BOX.
3. GATE VALVE AND FITTINGS SHALL BE LINE SIZE UNLESS OTHERWISE NOTED.
4. USE TEFLON TAPE ON ALL THREADED FITTINGS.
5. LOCATE VALVES IN SHRUB/GROUNDCOVER AREAS WHENEVER POSSIBLE.
6. LOOP EXTRA TRACER WIRE UP TO TOP OF BOX.



Jill Geller

JILL GELLER, CPRE
 PARKS, RECREATION & LIBRARIES DIRECTOR



PARKS, RECREATION, & LIBRARIES
 DEPARTMENT

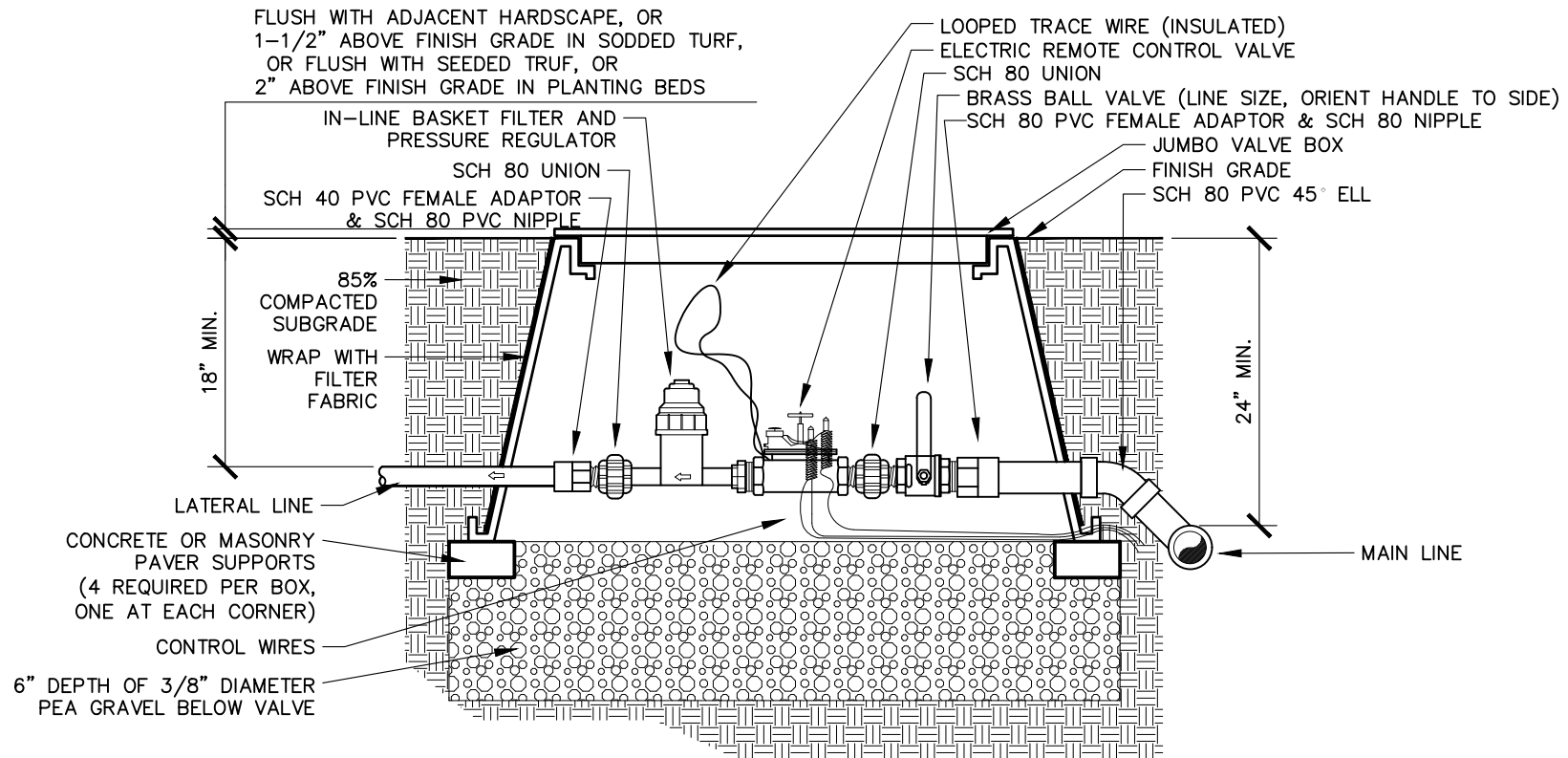
VALVE 4 INCH AND
 LARGER

SCALE: NONE
 REVISED: JULY 2025
 REVIEWED BY: T. GEE
 APPROVED BY: J. GELLER

PK-IR-11

NOTES

1. COMPACT SOIL AROUND BOX TO 90% MINIMUM COMPACTION.
2. PLACE DRAIN ROCK PRIOR TO INSTALLING VALVE BOX.
3. GATE VALVE AND FITTINGS SHALL BE LINE SIZE UNLESS OTHERWISE NOTED.
4. USE TEFLON TAPE ON ALL THREADED FITTINGS.
5. LOCATE VALVES IN SHRUB/GROUND COVER AREAS WHENEVER POSSIBLE.
6. LOOP EXTRA TRACER WIRE UP TO TOP OF BOX.
7. REQUIRE SADDLE TAP FITTINGS



Jill Geller

JILL GELLER, CPRE
PARKS, RECREATION & LIBRARIES DIRECTOR

NOTES

1. INSTALL VALVES A MINIMUM OF 12" FROM STRUCTURES OR HARDSCAPING.
2. INSTALL VALVES IN PLANTER BEDS WHEREVER POSSIBLE.
3. PLACE VALVE BOX AT RIGHT ANGLES TO STRUCTURES OR HARDSCAPING.
4. INSTALL VALVE BOX SO THAT TOP OF BOX IS FLUSH WITH ADJACENT HARDSCAPING.
5. USE TEFLON TAPE ON ALL MALE THREADS.
6. VALVES ON MAINLINES 3" AND LARGER REQUIRE SADDLE TAPS, 2 1/2" AND SMALLER MAINLINE REQUIRES GLUED SCHEDULE 80 FITTINGS.
7. PROVIDE SCHEDULE 80 THREADED UNION ON BOTH UPSTREAM AND DOWNSTREAM SIDES.
8. INSULATE AROUND PIPE AT BOX OPENINGS WITH PLASTIC SHEETING TO PREVENT SOIL FROM ENTERING BOX.
9. REFER TO SPECIFICATIONS FOR REQUIREMENTS FOR TAPING, EXPANSION COILS, WIRE CONNECTIONS, ETC.
10. ALL RCV'S SHALL BE TAGGED INDICATING STATION #'S.
11. ALL VALVE BOXES SHALL HAVE STATION #'S PERMANENTLY BURNED ON VALVE BOX LIDS.
MARKINGS SHALL BE AS FOLLOWS:
TURF VALVES: T#
LANDSCAPE AREA VALVES: L#
BUBBLER VALVES: B#

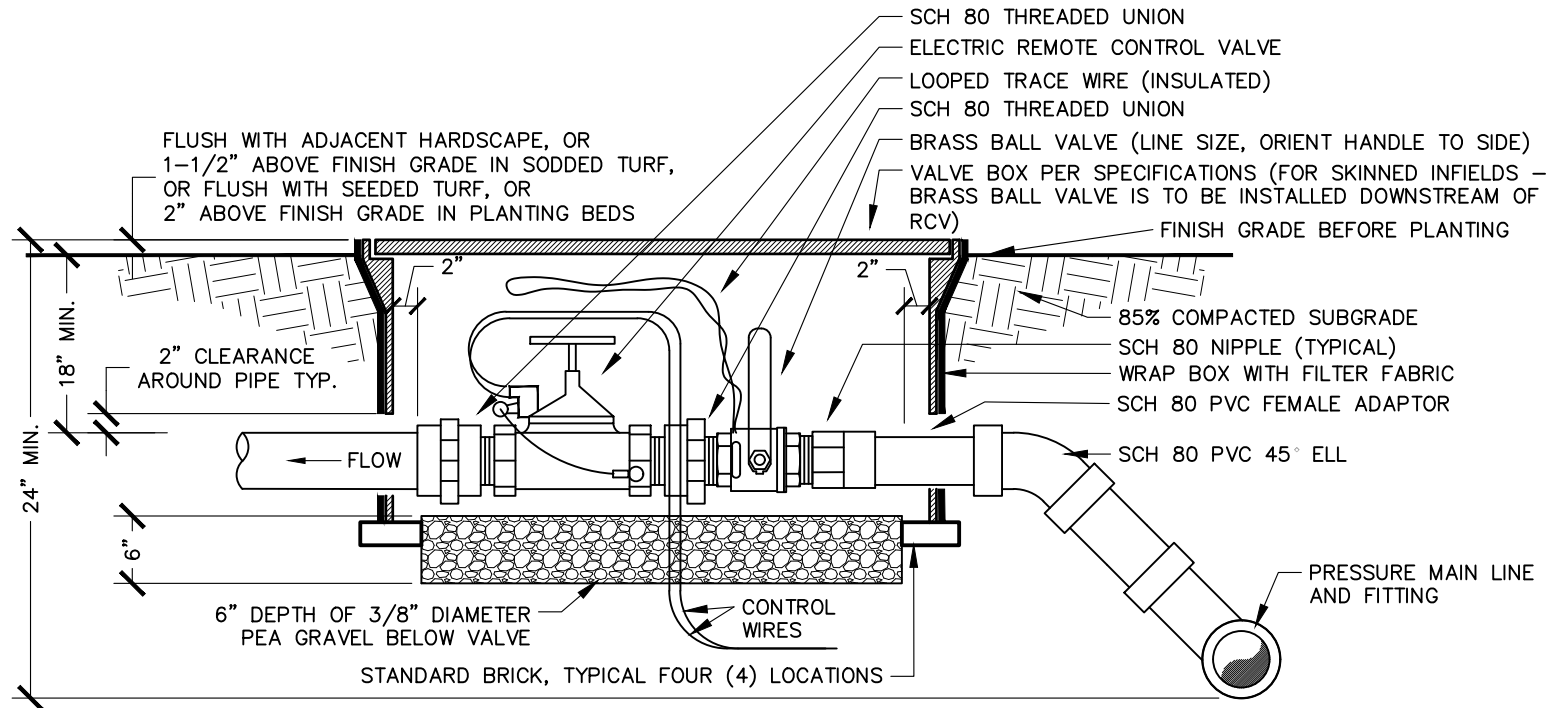


PARKS, RECREATION, & LIBRARIES
DEPARTMENT

VALVE DRIP CONTROL

SCALE: NONE
REVISED: JULY 2025
REVIEWED BY: T. GEE
APPROVED BY: J. GELLER

PK-IR-12



NOTES

1. INSTALL VALVES A MINIMUM OF 12" FROM STRUCTURES OR HARDSCAPING.
2. INSTALL VALVES IN PLANTER BEDS WHEREVER POSSIBLE.
3. PLACE VALVE BOX AT RIGHT ANGLES TO STRUCTURES OR HARDSCAPING.
4. INSTALL VALVE BOX SO THAT TOP OF BOX IS FLUSH WITH ADJACENT HARDSCAPING.
5. USE TEFLON TAPE ON ALL MALE THREADS.
6. VALVES ON MAINLINES 3" AND LARGER REQUIRE SADDLE TAPS, 2 1/2" AND SMALLER MAINLINE REQUIRES GLUED SCHEDULE 80 FITTINGS.
7. PROVIDE SCHEDULE 80 THREADED UNION ON BOTH UPSTREAM AND DOWNSTREAM SIDES.
8. INSULATE AROUND PIPE AT BOX OPENINGS WITH PLASTIC SHEETING TO PREVENT SOIL FROM ENTERING BOX.
9. REFER TO SPECIFICATIONS FOR REQUIREMENTS FOR TAPING, EXPANSION COILS, WIRE CONNECTIONS, ETC.
10. ALL RCV'S SHALL BE TAGGED INDICATING STATION #'S.
11. ALL VALVE BOXES SHALL HAVE STATION #'S PERMANENTLY BURNED ON VALVE BOX LIDS.
MARKINGS SHALL BE AS FOLLOWS:
TURF VALVES: T#
LANDSCAPE AREA VALVES: L#
BUBBLER VALVES: B#
12. REFER TO PK-51 FOR INFIELD VALVES DETAILS AND INFIELD VALVE BOX LAYOUT

Jill Geller

JILL GELLER, CPRE
PARKS, RECREATION & LIBRARIES DIRECTOR

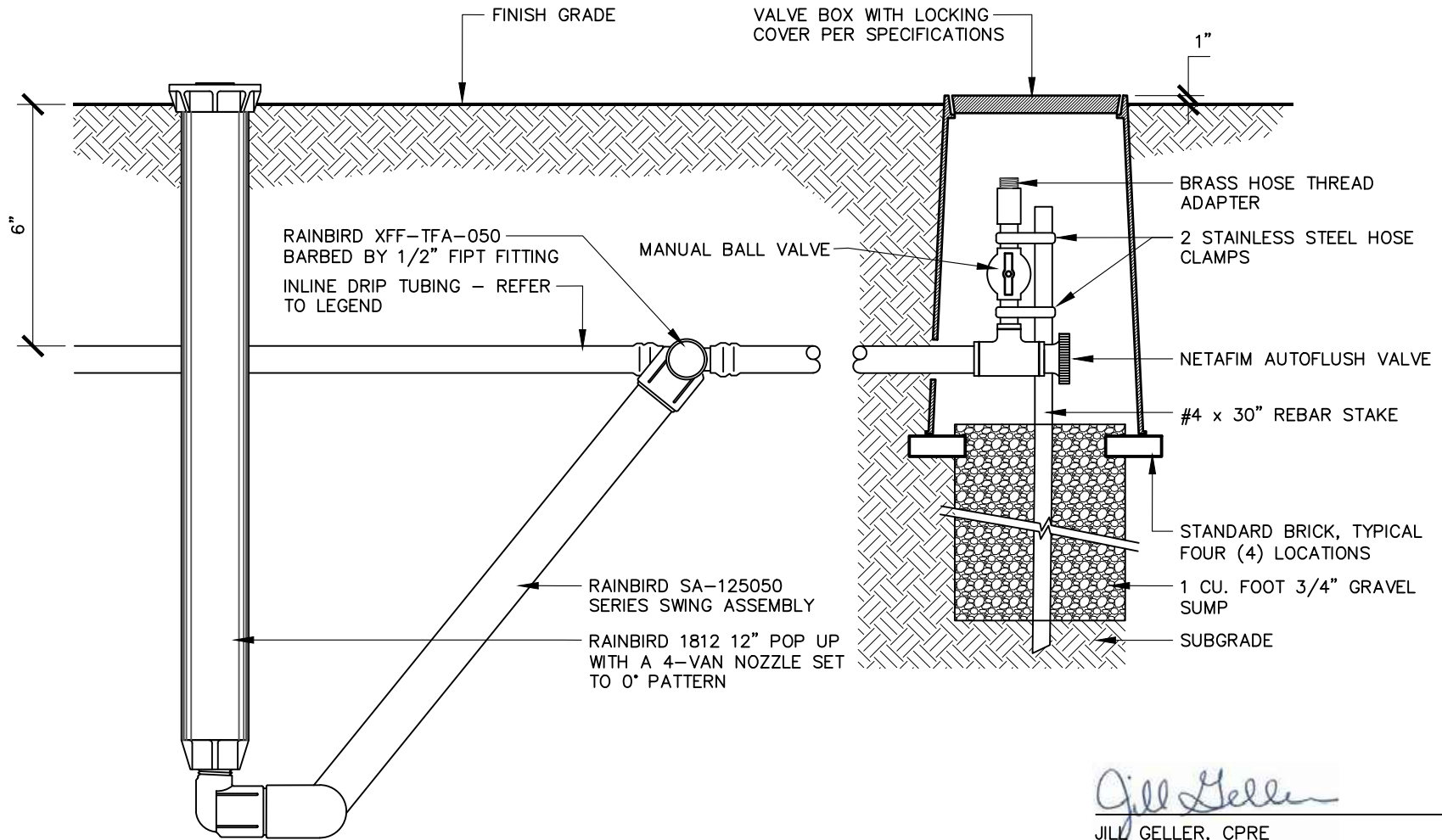


PARKS, RECREATION, & LIBRARIES
DEPARTMENT

**VALVE REMOTE
CONTROL AT GRADE**

SCALE: NONE
REVISED: JULY 2025
REVIEWED BY: T. GEE
APPROVED BY: J. GELLER

PK-IR-14



Jill Geller

JILL GELLER, CPRE
 PARKS, RECREATION & LIBRARIES DIRECTOR

NOTES

1. CENTER BALL VALVE IN VALVE BOX OPENING TO ALLOW EASY ACCESS.
2. INSTALL OPERATION INDICATOR WITHIN 18" OF FLUSH VALVE.
3. PLACE VALVE BOX AT RIGHT ANGLES TO STRUCTURES OR HARDSCAPING.
4. USE TEFLON TAPE ON ALL MALE THREADS.
5. INSTALL 3M LOCATOR BALLS AT ALL BOXES.
6. REFER TO SPECIFICATIONS FOR REQUIREMENTS FOR TAPING, EXPANSION COILS, WIRE CONNECTIONS, ETC.

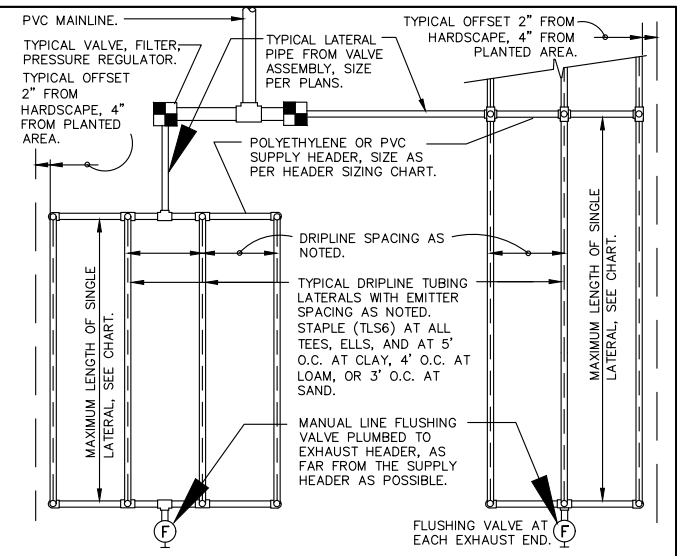
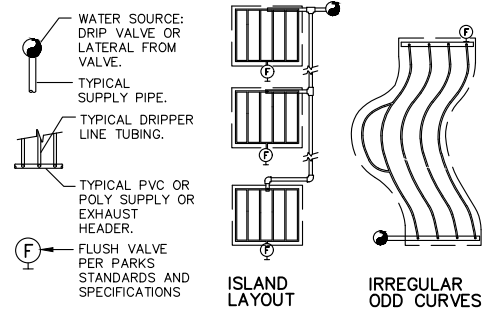
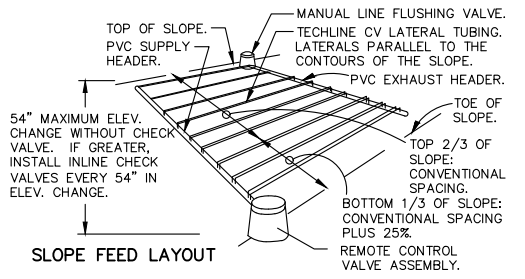


PARKS, RECREATION, & LIBRARIES
 DEPARTMENT

**DRIP FLUSH VALVE AND
 OPERATION INDICATOR**

SCALE: NONE
 REVISED: JULY 2025
 REVIEWED BY: T. GEE
 APPROVED BY: J. GELLER

PK-IR-15

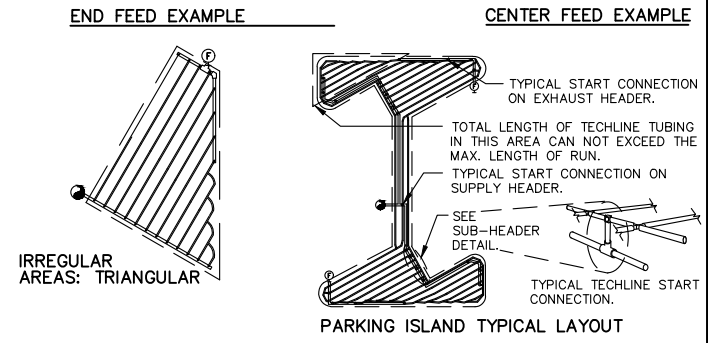
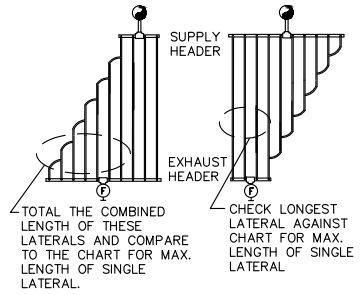


DRIPLINE MAXIMUM LENGTH OF SINGLE LATERAL (FEET)											
DRIPPER SPACING		12"				18"				24"	
DRIPPER FLOW RATE (GPH)		0.26	0.4	0.6	0.9	0.26	0.4	0.6	0.9	0.6	0.9
INLET PRESSURE (PSI)	15	127	109	86	65	177	151	120	91	152	116
	25	427	325	256	194	604	459	361	274	458	348
	35	539	409	322	244	763	579	456	346	580	440
	45	618	469	369	280	877	664	523	397	666	506

DRIPLINE FLOW PER 100 FEET									
DRIPPER SPACING	0.26 GPH DRIPPER		0.4 GPH DRIPPER		0.6 GPH DRIPPER		0.9 GPH DRIPPER		
	GPH	GPM	GPH	GPM	GPH	GPM	GPH	GPM	
12"	26.40	0.44	40.00	0.67	61.00	1.02	92.00	1.53	
18"	17.58	0.29	26.67	0.44	41.00	0.68	61.00	1.02	
24"	N/A	N/A	N/A	N/A	31.00	0.51	46.00	0.77	

DRIPLINE GENERAL GUIDELINES FOR WATERING TIME						
	TURF			SHRUB & GROUND COVER		
	CLAY	LOAM	SANDY	CLAY	LOAM	SANDY
DIPPER FLOW (GPH)	0.26	0.4	0.6	0.26	0.4	0.6
DRIPPER INTERVAL	18"	12"	12"	18"	18"	12"
LATERAL (ROW) SPACING	18"-22"	18"-22"	12"-16"	18"-24"	18"-24"	16"-20"
APPLICATION RATE (IN/HR)	.19-.015	.43-.35	.96-.72	.19-.21	.29-.21	.72-.58
TIME TO APPLY 1/4"	79-100	35-43	16-21	79-107	52-71	21-26

SUPPLY AND EXHAUST HEADER SIZING CHART	
STEP 1:	ADD LENGTH OF ALL TECHLINE LATERAL TUBING CONNECTED TO THE HEADER.
STEP 2:	DIVIDE THIS TOTAL LENGTH BY 100 TO INDICATE THE LENGTH IN UNITS OF 100.
STEP 3:	LOCATE THE GPM THAT APPLIES FOR EACH UNIT OF 100 FEET LENGTH ON THE CHART "TECHLINE FLOW PER 100 FEET". MULTIPLY THIS GPM NUMBER TIMES THE UNITS OF 100 FEET FOR THE TOTAL GPM AT THIS HEADER.
STEP 4:	SIZE THE HEADER WITH THE FOLLOWING:
	1 TO 6 GPM: 3/4" HEADER. 6 TO 10 GPM: 1" HEADER.
	10 TO 20 GPM: 1 1/4" HEADER. 20 TO 30 GPM: 1 1/2" HEADER.



- NOTES**
1. USE SUPPLY AND EXHAUST HEADER SIZING CHART UNLESS NOTED ON PLANS
 2. REFER TO PLANS FOR LOCATION OF SUPPLY AND EXHAUST AREA PER DRIP AREA AND FEED LAYOUT
 3. AIR RELIEF VALVES TO BE LOCATED AT THE HIGHEST ELEVATION OF EACH DRIP AREA
 4. DRIP INDICATOR AND FLUSH VALVE TO BE LOCATED AT THE LOWEST ELEVATION OF EACH AREA OF DRIP AND INSTALLED PER PARKS STANDARDS AND SPECIFICATIONS

Jill Geller

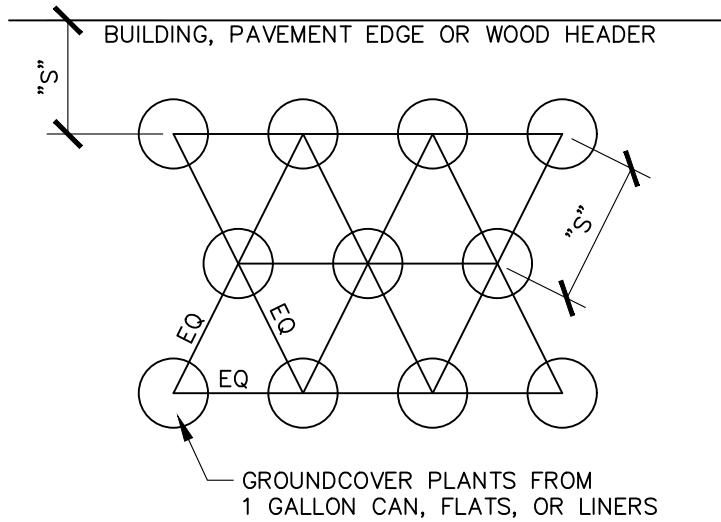
JILL GELLER, CPRE
PARKS, RECREATION & LIBRARIES DIRECTOR

CITY OF **ROSEVILLE** CALIFORNIA
PARKS, RECREATION, & LIBRARIES DEPARTMENT

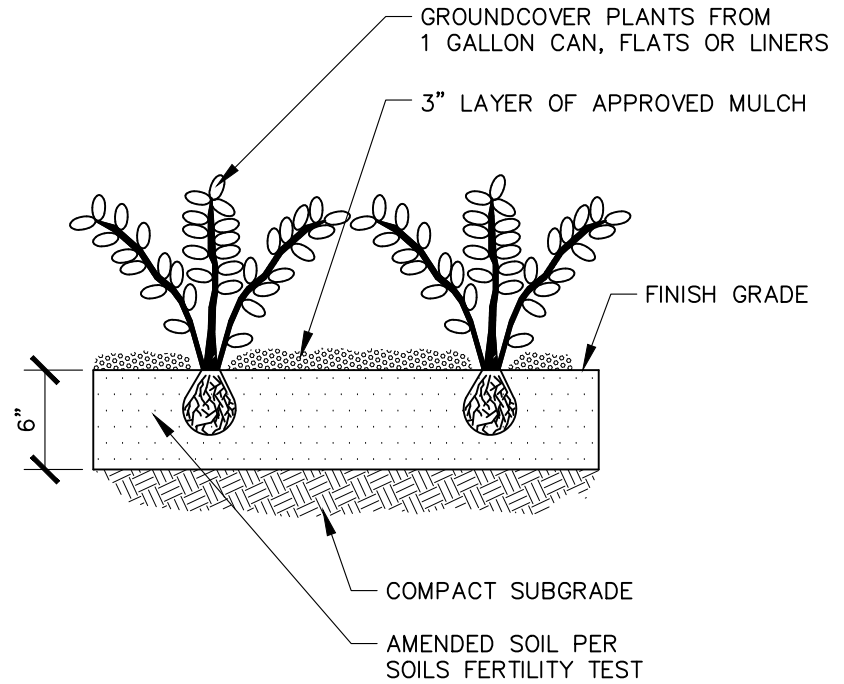
TYPICAL DRIPLINE DRIPGRID REQUIREMENTS

SCALE: NONE
REVISED: JULY 2025
REVIEWED BY: T. GEE
APPROVED BY: J. GELLER

PK-IR-16



PLAN



SECTION

Jill Geller

JILL GELLER, CPRE
PARKS, RECREATION & LIBRARIES DIRECTOR



PARKS, RECREATION, & LIBRARIES
DEPARTMENT

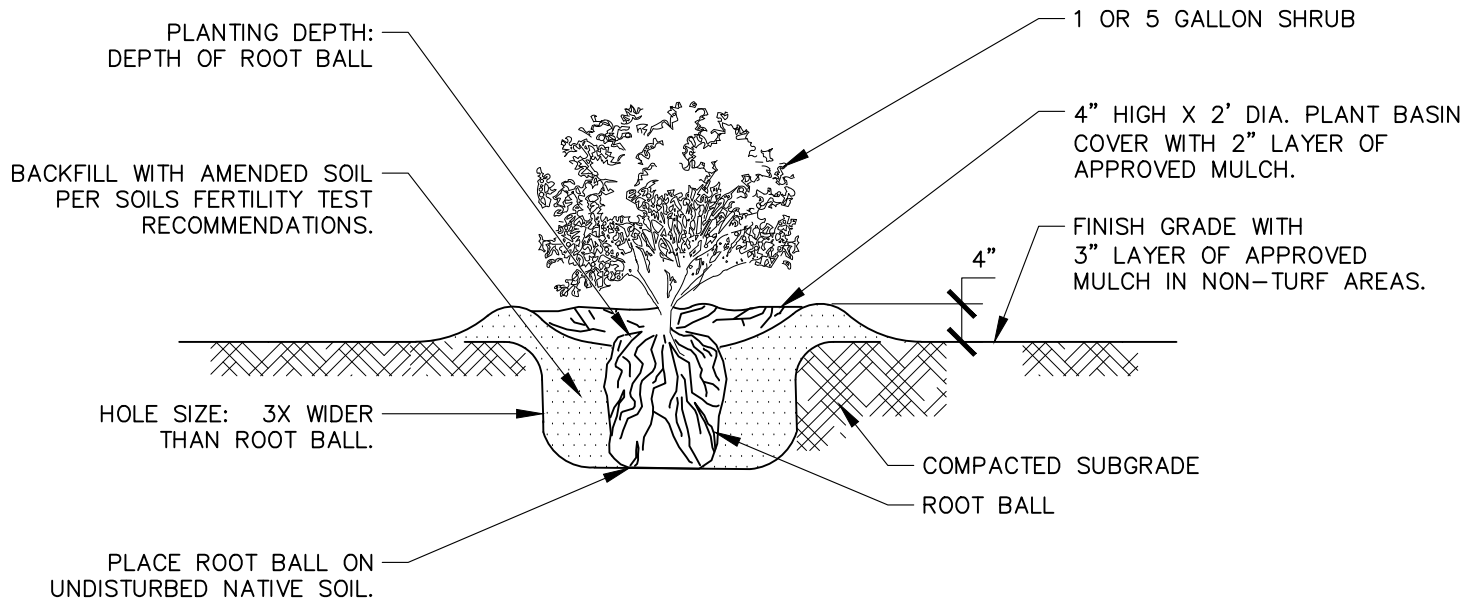
GROUNDCOVER PLANTING

SCALE: NONE
REVISED: JULY 2025
REVIEWED BY: T. GEE
APPROVED BY: J. GELLER

PK-LS-1

NOTES

- "S" REFERS TO PLANT SPACING, SEE PLANT TABLE ON CONSTRUCTION DOCUMENTS.



Jill Geller

JILL GELLER, CPRE
PARKS, RECREATION & LIBRARIES DIRECTOR



PARKS, RECREATION, & LIBRARIES
DEPARTMENT

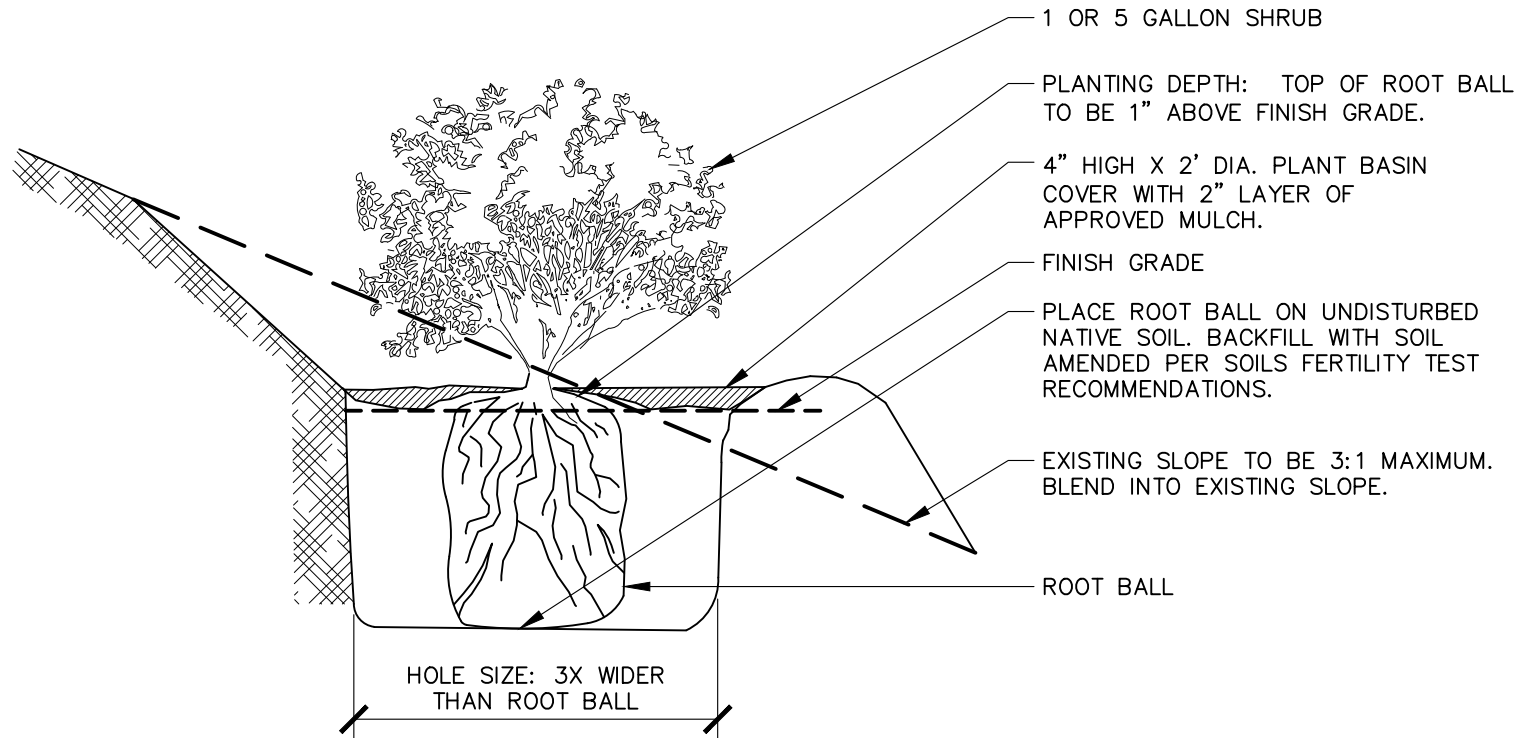
SHRUB PLANTING

SCALE: NONE
REVISED: JULY 2025
REVIEWED BY: T. GEE
APPROVED BY: J. GELLER

PK-LS-2

NOTES

1. AMENDMENT SHALL BE CONSISTENT WITH SOILS FERTILITY TEST.
2. PLANTING AREAS SHALL BE TREATED WITH PRE-EMERGENT AFTER PLANTING IS COMPLETE AND PRIOR TO MULCH INSTALLATION.
3. SCORE ROOT BALL IN VARIOUS LOCATIONS.



Jill Geller

JILL GELLER, CPRE
 PARKS, RECREATION & LIBRARIES DIRECTOR



PARKS, RECREATION, & LIBRARIES
 DEPARTMENT

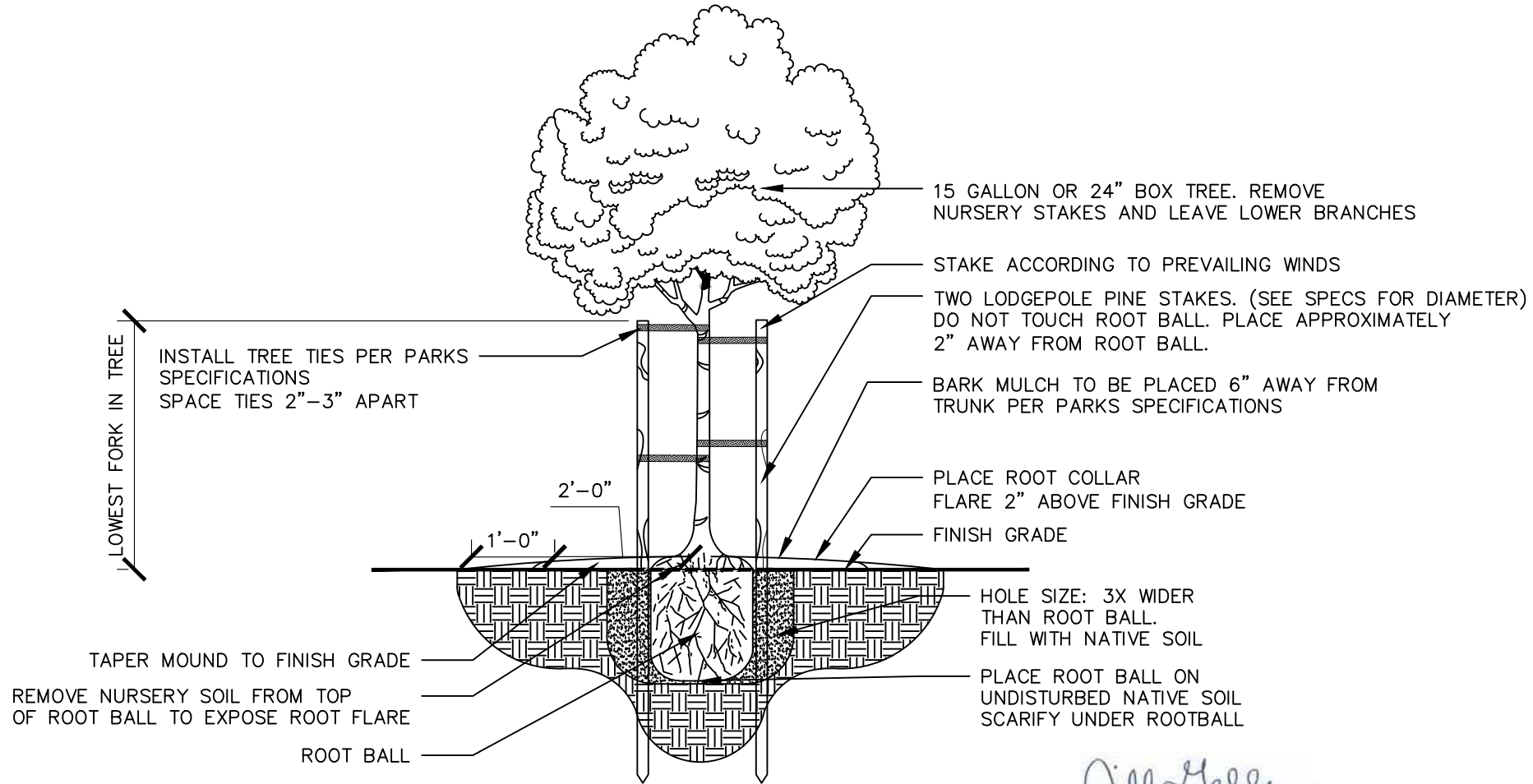
SHRUB PLANTING ON SLOPES

NOTES

1. PLANTER AREAS SHALL BE TREATED WITH PRE-EMERGENT HERBICIDE AFTER PLANTING IS COMPLETE AND PRIOR TO MULCH INSTALLATION.
2. BUBBLERS TO BE PLACED ON UPHILL SIDE OF SHRUB.
3. SCORE ROOT BALL IN VARIOUS LOCATIONS.

SCALE: NONE
 REVISED: JULY 2025
 REVIEWED BY: T. GEE
 APPROVED BY: J. GELLER

PK-LS-3




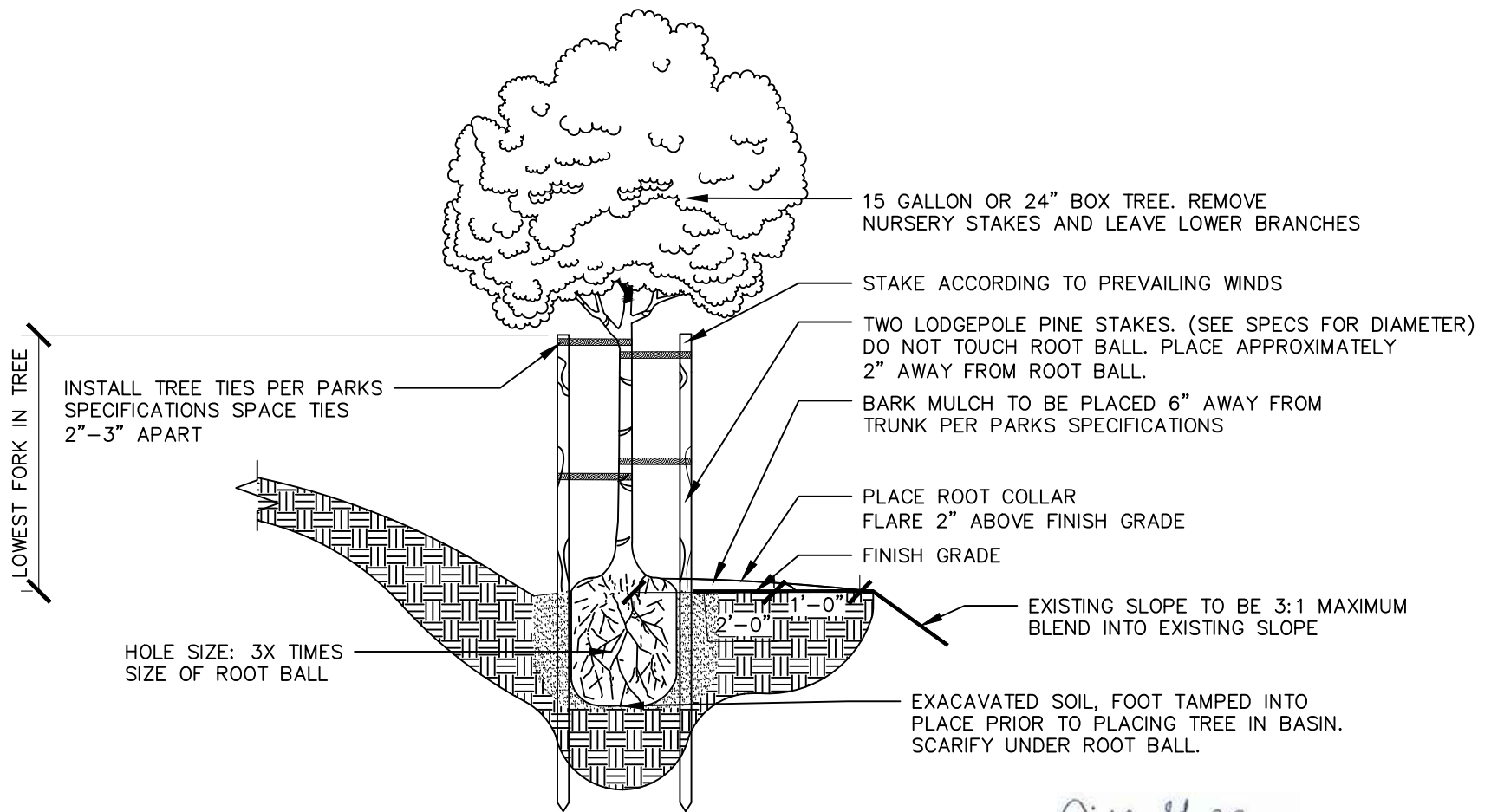
Jill Geller

JILL GELLER, CPRE
PARKS, RECREATION & LIBRARIES DIRECTOR

NOTES

1. SCORE ROOT BALL AND CUT GIRDLING ROOTS ON ALL FOUR SIDES OF ROOT BALL.
2. FOR LAWN AREAS: PROVIDE A 5' DIA. AREA FREE OF TURF.
3. TREES FURNISHED IN #15 NURSERY CONTAINERS REQUIRE 2" DIA. STAKES. TREES LESS THAN 8' IN HEIGHT REQUIRE AN 8' STAKE. TREES 8' OR GREATER IN HEIGHT REQUIRE A 10' STAKE. TREES FURNISHED IN 24" BOXES REQUIRE 3" DIA. BY 10' LONG STAKES.
4. INSTALL 2 TREE TIES AT 2/3 OF TREE HEIGHT AND 2 TREE TIES AT 1/2 OF TREE HEIGHT PER PARKS SPECIFICATIONS
5. TREE STAKES SHOULD BE INSERTED INTO THE GROUND TO A MINIMUM DEPTH OF 18".
6. TREES TO BE STRUCTURALLY PRUNED BEFORE PLANTING. ESTABLISH A CENTRAL LEADER AND REDUCE OR REMOVE CODOMINANT LEADERS.

	PARKS, RECREATION, & LIBRARIES DEPARTMENT
<h2>TREE PLANTING</h2>	
SCALE: NONE REVISED: JULY 2025 REVIEWED BY: T. GEE APPROVED BY: J. GELLER	<h1>PK-LS-4</h1>



Jill Geller

JILL GELLER, CPRE
PARKS, RECREATION & LIBRARIES DIRECTOR

NOTES

1. SCORE ROOT BALL AND CUT GIRDLING ROOTS ON ALL FOUR SIDES OF ROOT BALL.
2. TREES FURNISHED IN #15 NURSERY CONTAINERS REQUIRE 2" DIA. STAKES. TREES LESS THAN 8' IN HEIGHT REQUIRE AN 8' STAKE. TREES 8' OR GREATER IN HEIGHT REQUIRE A 10' STAKE. TREES FURNISHED IN 24" BOXES REQUIRE 3" DIA. BY 10' LONG STAKES.
3. INSTALL 2 TREE TIES AT 2/3 OF TREE HEIGHT AND 2 TREE TIES AT 1/2 OF TREE HEIGHT PER PARKS SPECIFICATIONS
4. STAKES SHOULD BE INSERTED INTO THE GROUND TO A MINIMUM DEPTH OF 18".
5. TREES TO BE STRUCTURALLY PRUNED BEFORE PLANTING. ESTABLISH CENTRAL LEADER AND REDUCE OR REMOVE CODOMINANT LEADERS.
6. REMOVE NURSERY SOIL FROM TOP OF ROOT BALL TO EXPOSE ROOT FLARE



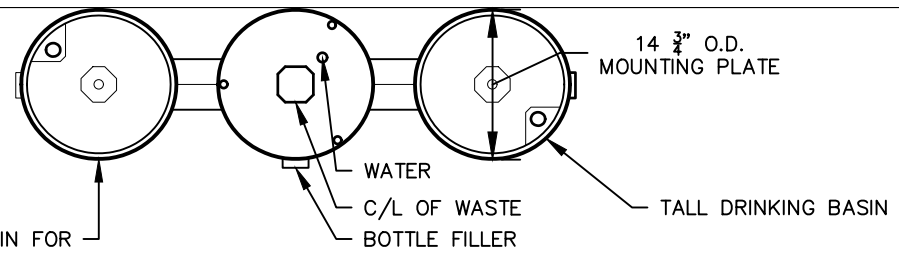
PARKS, RECREATION, & LIBRARIES
DEPARTMENT

TREE PLANTING ON SLOPES

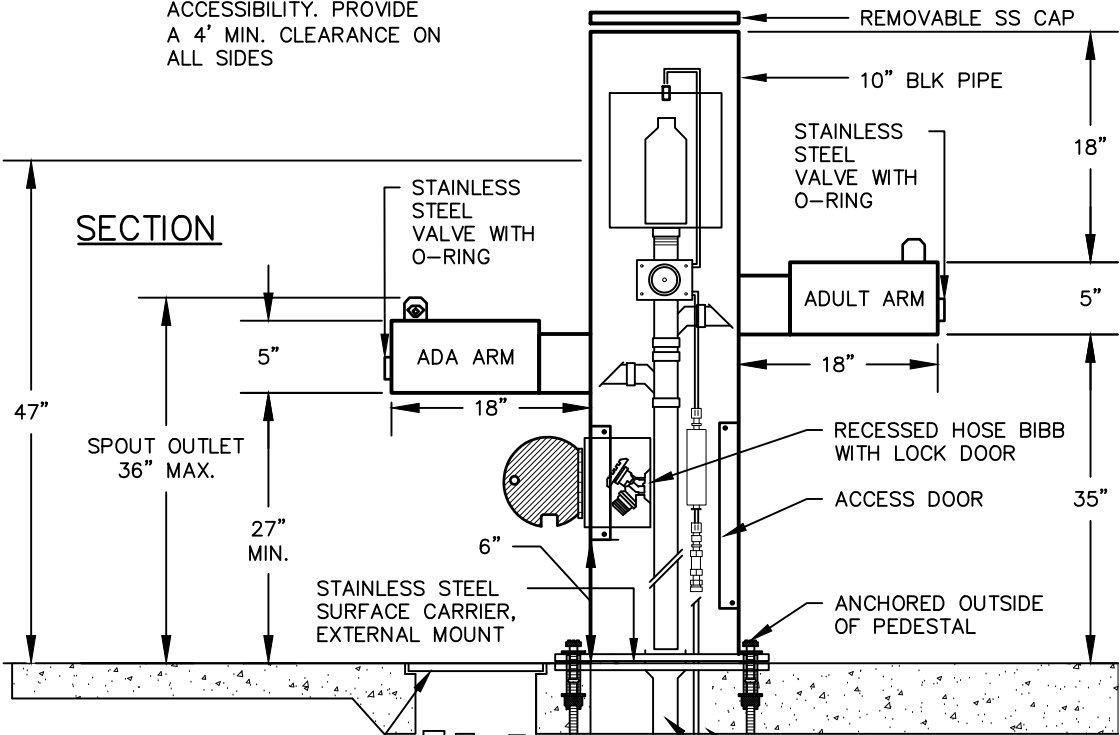
SCALE: NONE
REVISED: JULY 2025
REVIEWED BY: T. GEE
APPROVED BY: J. GELLER

PL-LS-5

PLAN



SECTION



NOTES

1. PROVIDE LINE SIZE TWO WAY CLEAN OUT EVERY 100' ON SANITARY SEWER LINE UPSTREAM OF Y.
2. 10" STAINLESS STEEL SURFACE CARRIER REQUIRED, EXTERNAL MOUNT.
3. FOUNTAIN BASE PER MANUFACTURER'S SPECIFICATIONS.
4. LOCATION OF DRINKING FOUNTAIN "ON" BUTTON AND LOCATION OF BOTTLE FILLER SPOUT (IF APPLICABLE) SHALL BE DETERMINED VIA THE SUBMITTAL PROCESS.
5. INCLUDE BOTTLE FILLER OPTION AS SHOWN ON PLANS/SPECIFICATIONS.
6. MAY DISCHARGE TO SUMP IN LIEU OF SEWER CONNECTION IF SHOWN ON PLANS.

Jill Geller

JILL GELLER, CPRE
PARKS, RECREATION & LIBRARIES DIRECTOR



PARKS, RECREATION, & LIBRARIES
DEPARTMENT

DRINKING FOUNTAIN

SCALE: NONE
REVISED: JULY 2025
REVIEWED BY: T. GEE
APPROVED BY: J. GELLER

PK-MI-1

B-16 CONCRETE VALVE BOX

LEAD-FREE ANGLE GATE VALVE, LINE SIZE. INSTALL SCH 40 PVC PIPE FROM POINT OF CONNECTION TO GATE VALE AT DRINKING FOUNTAIN

SCH 80 PVC OR COPPER SUPPLY LINE, SIZE AS NOTED ON THE PLANS

PLUGGED TEE, LINE SIZE. TEE TO BE INSTALLED FACING UP

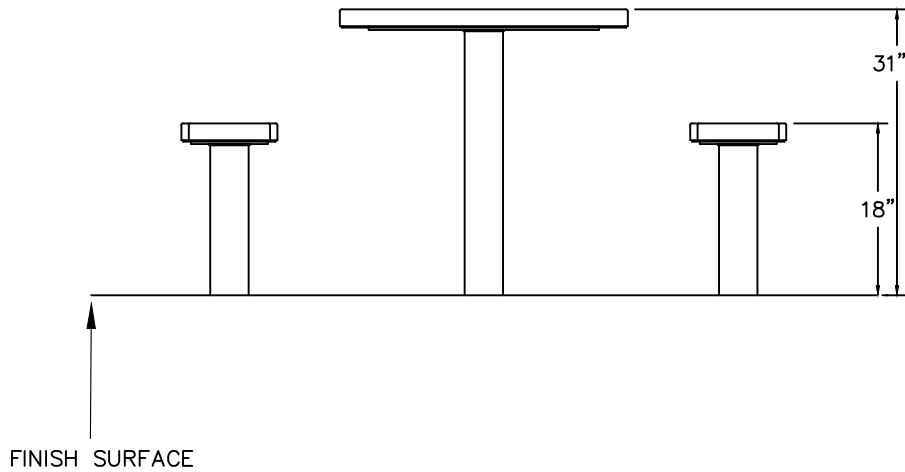
WATER STRAINER, WRAP WITH INSULATION

STAINLESS STEEL BRAID HOSE (LINE SIZE) TO FOUNTAIN CONNECTION

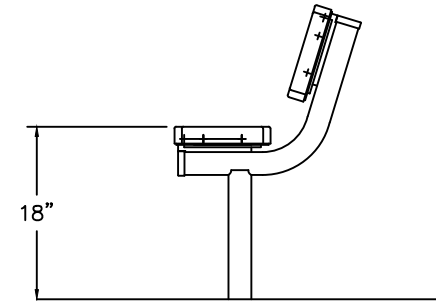
BOLT CENTERED UNDER ADA ARM

6 5/8" SLEEVE
2" OR 3" OPEN HUB DRAIN PER PARKS SPECIFICATIONS
VCP OR SDR-35 PER PLAN

3" MIN. CONNECT TO SANITARY SEWER (SEE PLANS). PROVIDE AND INSTALL P-TRAP



TABLE



BENCH

Jill Geller

JILL GELLER, CPRE
PARKS, RECREATION & LIBRARIES DIRECTOR

NOTES

1. FURNISHING TO BE INSTALLED IN SURFACE MOUNT UNLESS OTHERWISE SPECIFIED
2. FOR IN GROUND MOUNT – INSTALL FOOTINGS PER MANUFACTURERS RECOMMENDATIONS.
3. FOR IN GROUND MOUNT – INSTALL PLUMB AND LEVEL.
4. INSTALLATION HEIGHTS:
TABLE (TOP)– 28” MIN. – 34” MAX. PREFER 31” AT MID-POINT.
–MAINTAIN 27” MIN. CLEAR SPACE TO BOTTOM OF TABLE
BENCH (TOP)– 17” MIN. – 19” MAX. PREFER 18” AT MID-POINT.
5. REFER TO SPECIFICATIONS FOR SPECIFIED PRODUCTS.

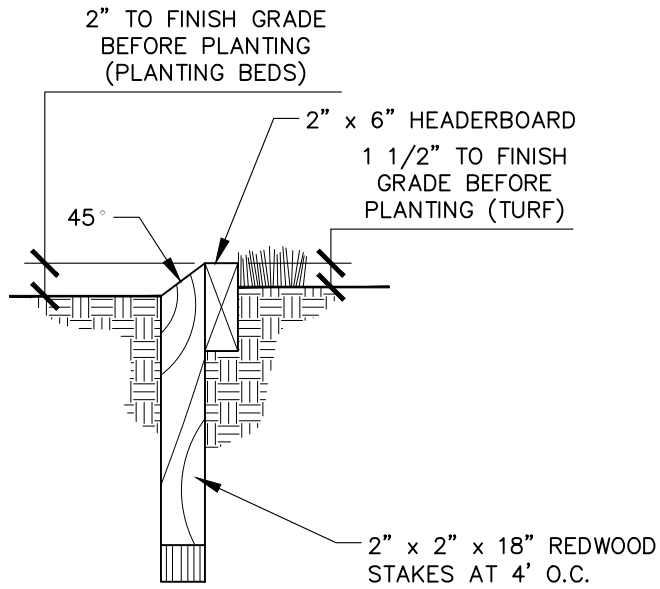


PARKS, RECREATION, & LIBRARIES
DEPARTMENT

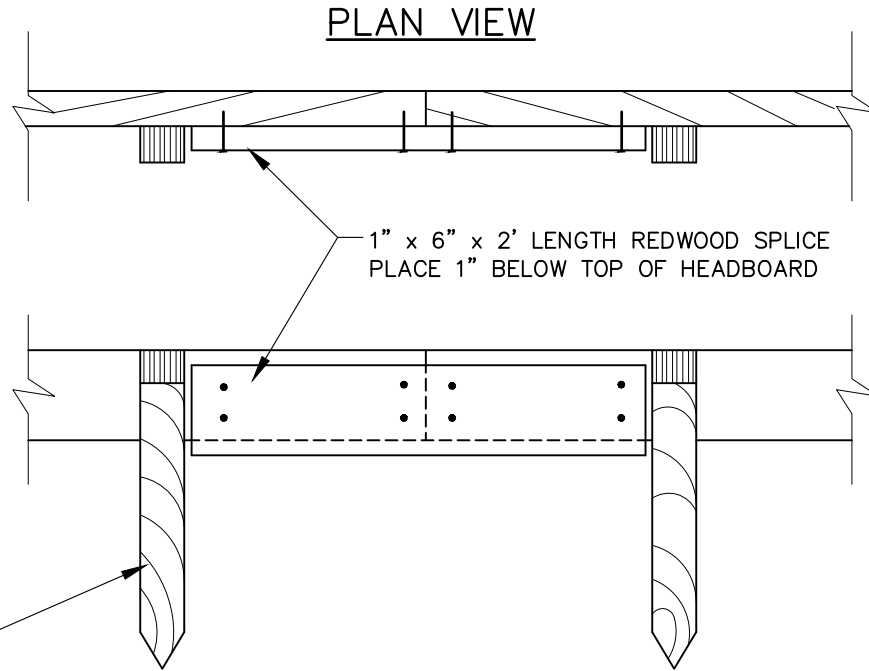
PICNIC TABLE AND BENCH
INSTALLATION HEIGHTS

SCALE: NONE
REVISED: JULY 2025
REVIEWED BY: T. GEE
APPROVED BY: J. GELLER

PK-MI-2



SECTION



SPLICE DETAIL

Jill Geller

JILL GELLER, CPRE
PARKS, RECREATION & LIBRARIES DIRECTOR



PARKS, RECREATION, & LIBRARIES
DEPARTMENT

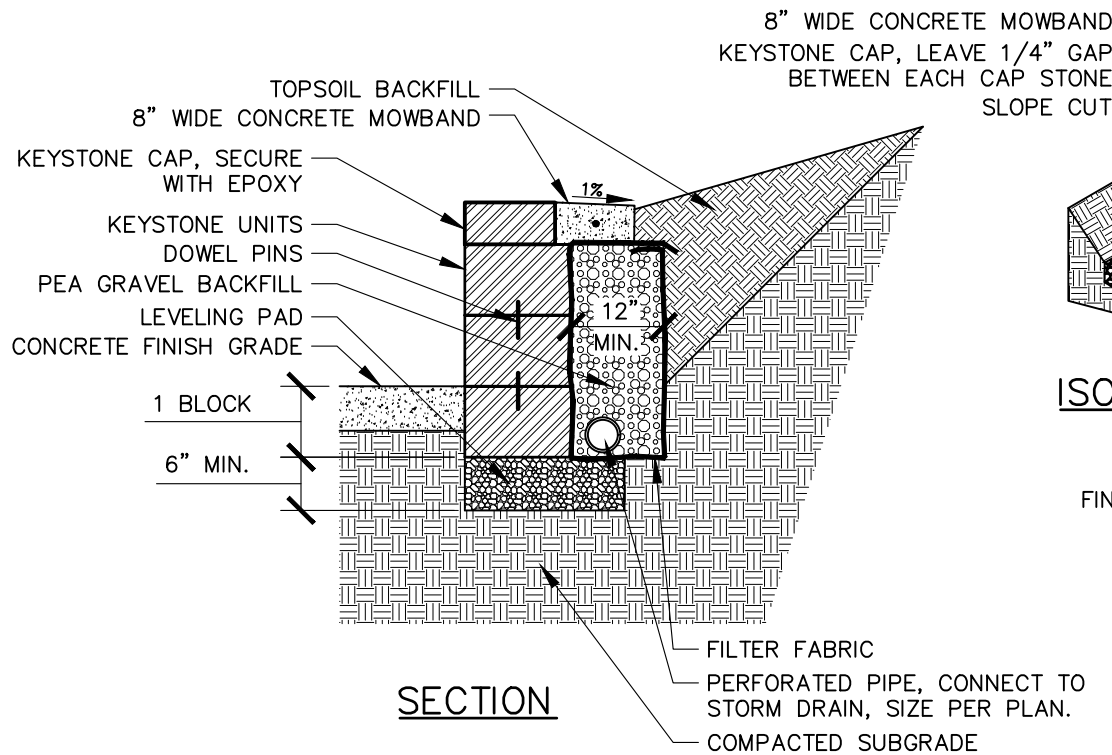
REDWOOD HEADER

SCALE: NONE
REVISED: JULY 2025
REVIEWED BY: T. GEE
APPROVED BY: J. GELLER

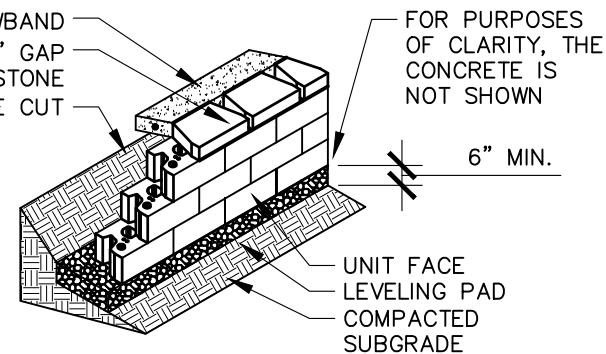
PK-MI-3

NOTES

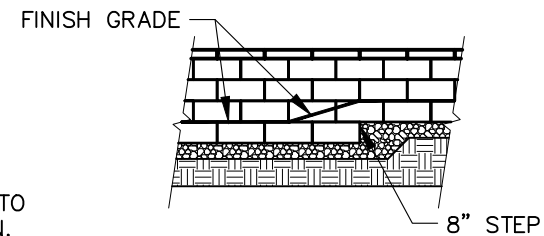
1. USE TWO 1" x 6" REDWOOD ON ALL CURVES (WHERE NECESSARY).
2. INSTALL ALL STAKES AND SPLICES ON PLANTING SIDE OF HEADER BOARD.
3. ALL NAILS SHALL BE GALVANIZED.
4. ALL LUMBER SHALL BE REDWOOD, ROUGH CONSTRUCTION HEART GRADE IN ACCORDANCE TO CALIFORNIA REDWOOD ASSOCIATION GRADING RULES.
5. UTILIZE ONLY AS APPROVED BY CITY. DO NOT USE IN TURF OR PLANTED AREAS.



8" WIDE CONCRETE MOWBAND
KEYSTONE CAP, LEAVE 1/4" GAP
BETWEEN EACH CAP STONE
SLOPE CUT



ISOMETRIC VIEW



FRONT ELEVATION

Jill Geller

JILL GELLER, CPRE
PARKS, RECREATION & LIBRARIES DIRECTOR



PARKS, RECREATION, & LIBRARIES
DEPARTMENT

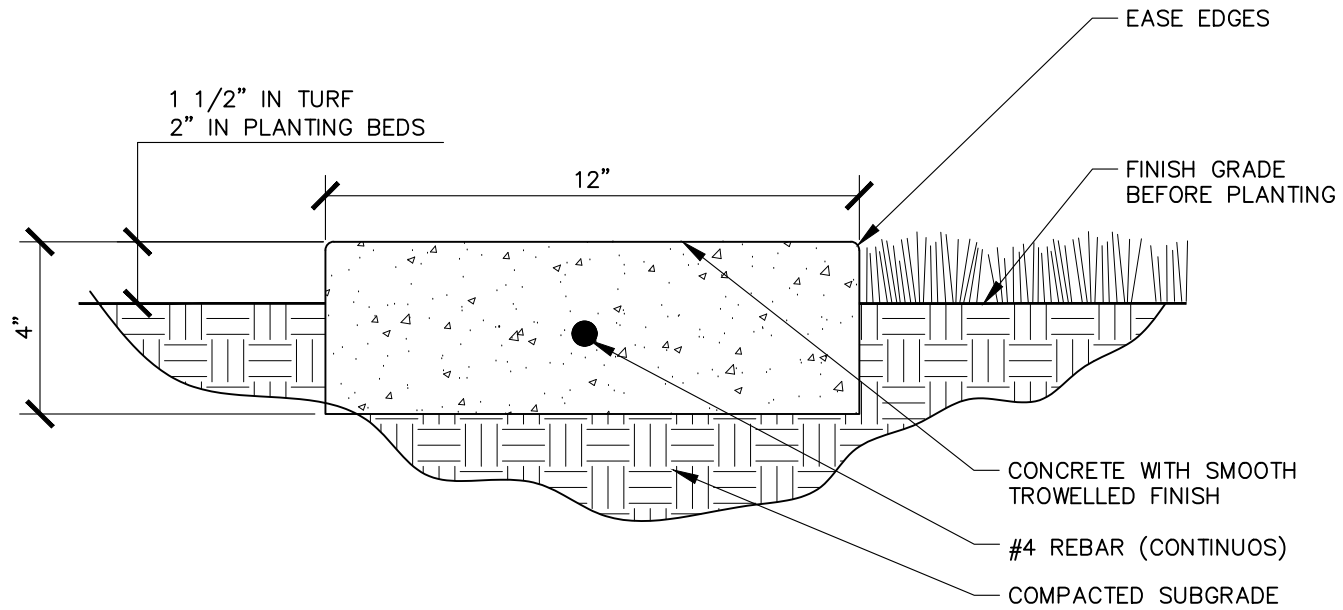
KEYSTONE SEAT WALL
RETAINING WALL

SCALE: NONE
REVISED: JULY 2025
REVIEWED BY: T. GEE
APPROVED BY: J. GELLER

PK-MI-4

NOTES

1. KEYSTONE UNITS FOR THIS PROJECT SHALL BE COMPACT STRAIGHT FACE UNITS (18"W x 8"H x 12"D) AND MINICAP UNITS (18"W x 4"H x 10"D).
2. THE LEVELING PAD IS TO BE CONSTRUCTED OF COMPACTED CLASS II AGGREGATE BASE OR 2,000 PSI CONCRETE.
3. SUBGRADE COMPACTED TO A MINIMUM OF 95% RELATIVE DENSITY.
4. LEAVE NON-GROUTED GAP BETWEEN CAP STONES AT FRONT, GROUT AT BACK TO HOLD.
5. APPLY ANTI-GRAFFITI SEALANT TO ALL SURFACES. WALL NOT TO BE USED IN A PUBLIC RIGHT-OF-WAY.



Jill Geller

JILL GELLER, CPRE
PARKS, RECREATION & LIBRARIES DIRECTOR



PARKS, RECREATION, & LIBRARIES
DEPARTMENT

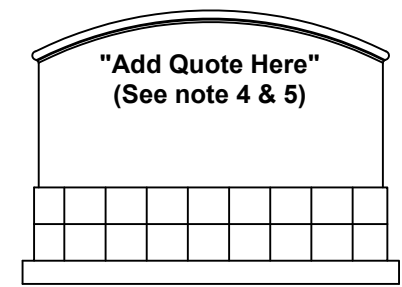
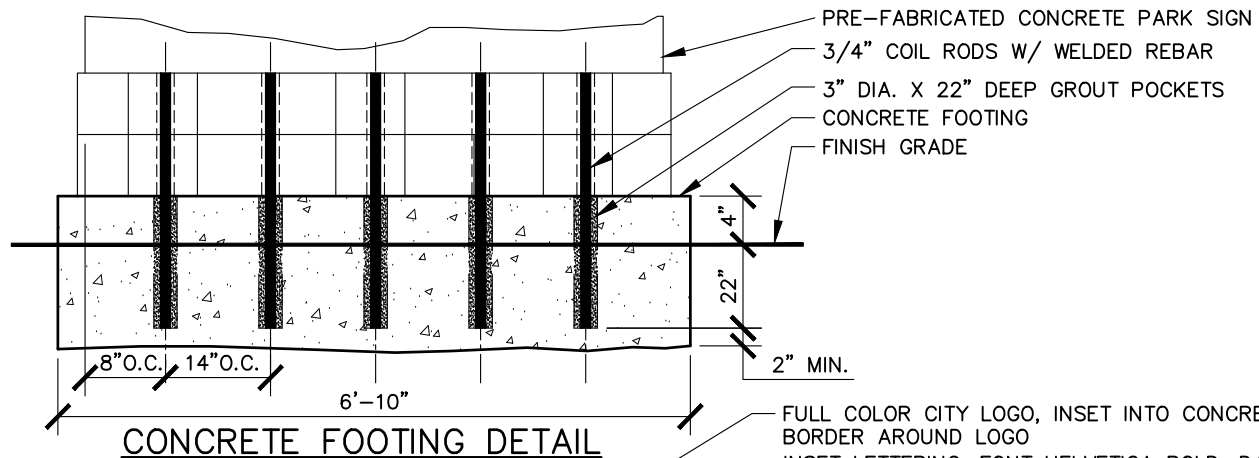
CONCRETE MOWBAND

SCALE: NONE
REVISED: JULY 2025
REVIEWED BY: T. GEE
APPROVED BY: J. GELLER

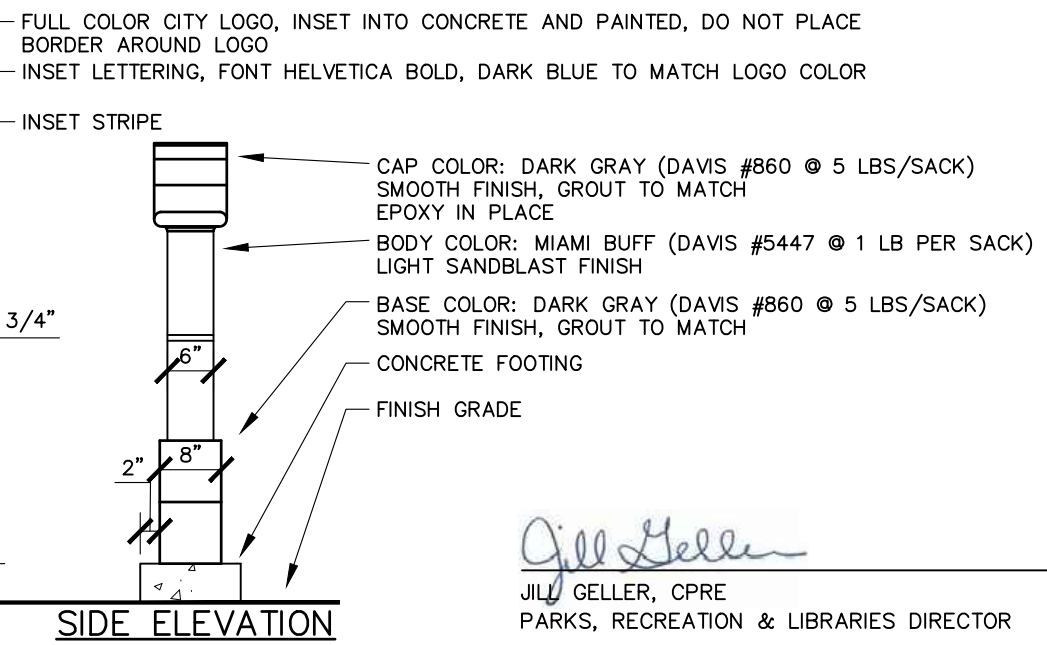
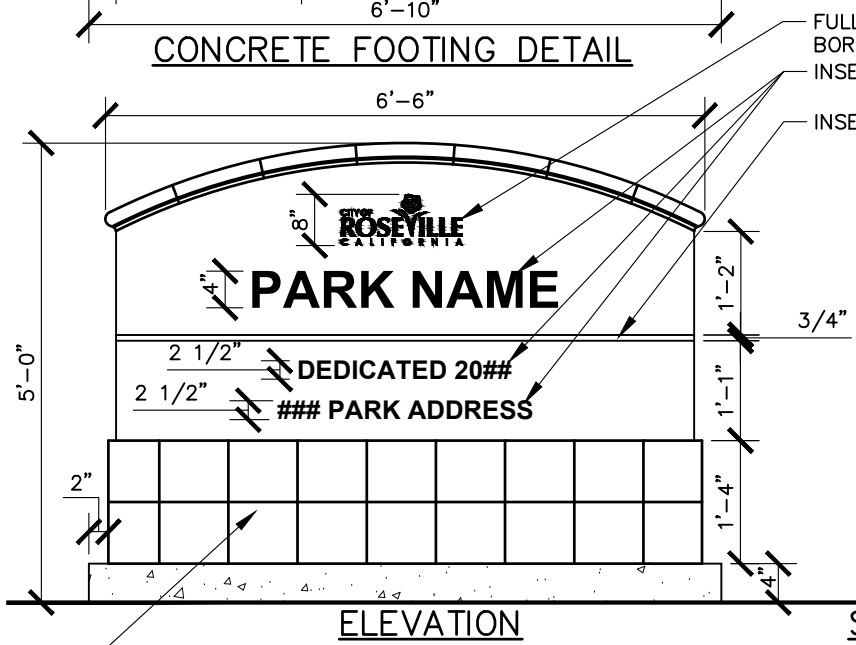
PK-MI-5

NOTES

1. WHERE VEHICULAR SERVICE/MAINTENANCE TRAFFIC WILL CROSS MOWBANDS, CONCRETE SECTIONS SHALL BE THICKENED TO 6" (SELECT AREAS ONLY).
2. PROVIDE 1/2" SCORE JOINTS AT 20' O.C.



BACK



Jill Geller

JILL GELLER, CPRE
 PARKS, RECREATION & LIBRARIES DIRECTOR

	PARKS, RECREATION, & LIBRARIES DEPARTMENT
---	--

PARK IDENTIFICATION SIGN

NOTES

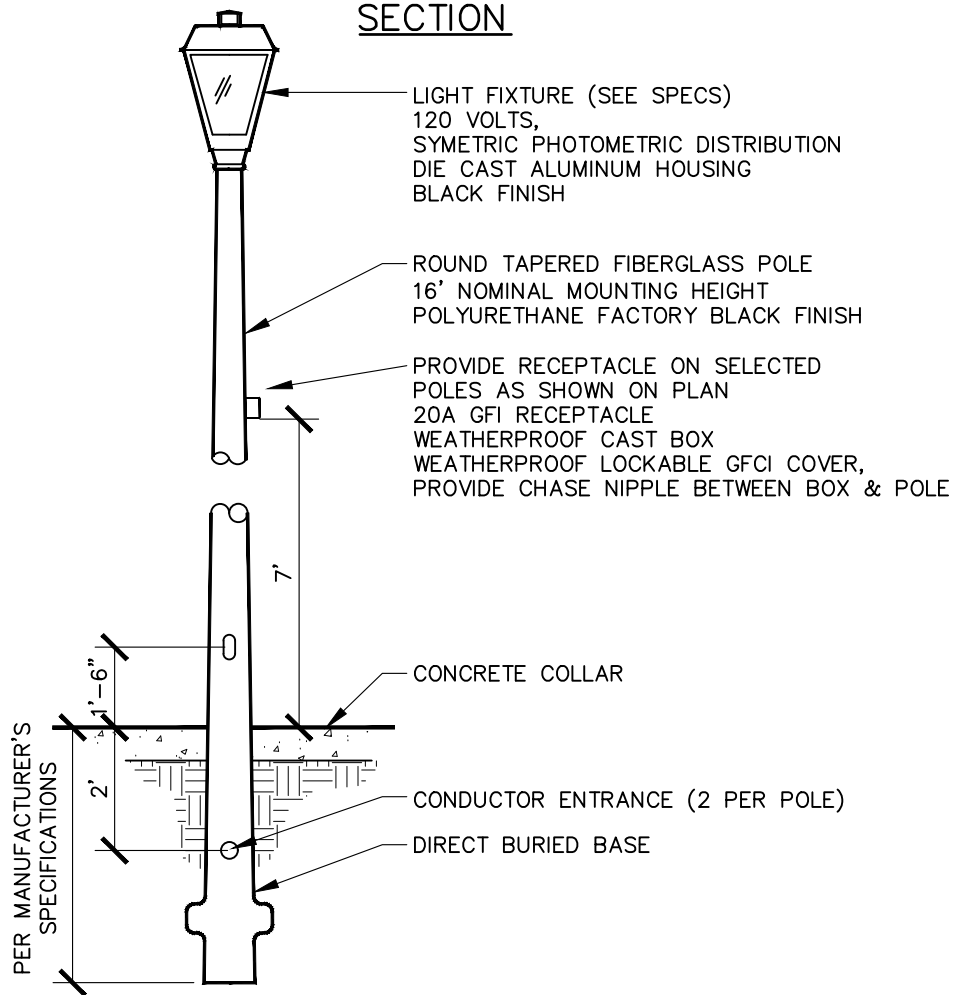
1. CONSULT PROJECT MANAGER FOR CITY OF ROSEVILLE LOGO SPECIFICATIONS.
2. SUBMIT SHOP DRAWINGS FOR APPROVAL PRIOR TO SIGN CONSTRUCTION.
3. CONSTRUCT CONCRETE FOOTING PER MANUFACTURER'S SPECIFICATIONS.
4. COORDINATE PARK NAME, DEDICATION YEAR, ADDRESS AND QUOTE ON BACK OF SIGN WITH PROJECT MANAGER PRIOR TO PLACING ORDER.
5. QUOTE ON BACK OF SIGN: INSET LETTERING, 2-1/2" TALL, FONT HELVETICA, DARK BLUE.

SCALE: NONE
 REVISED: JULY 2025
 REVIEWED BY: T. GEE
 APPROVED BY: J. GELLER

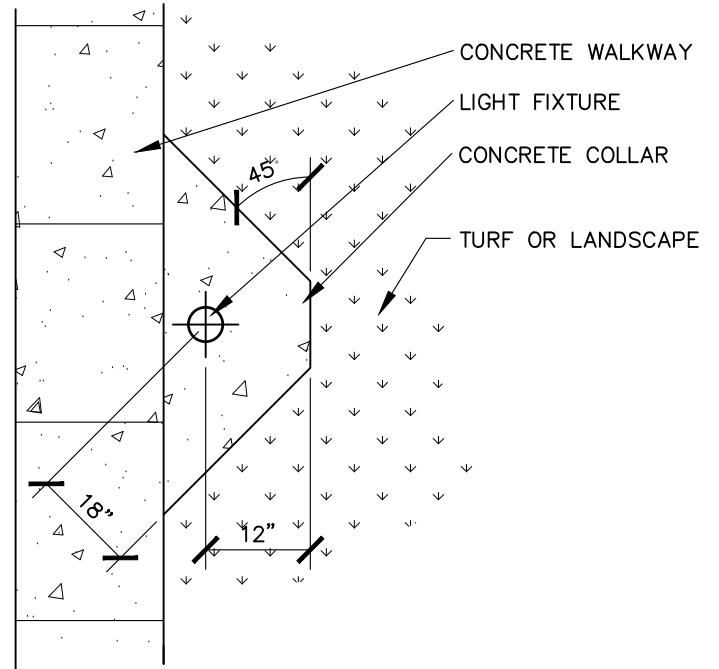
PK-MI-6

BASE WITH SCORE LINES TO HAVE APPEARANCE OF TILE

SECTION



PLAN



Jill Geller

JILL GELLER, CPRE
PARKS, RECREATION & LIBRARIES DIRECTOR

CITY OF **ROSEVILLE** CALIFORNIA
PARKS, RECREATION, & LIBRARIES DEPARTMENT

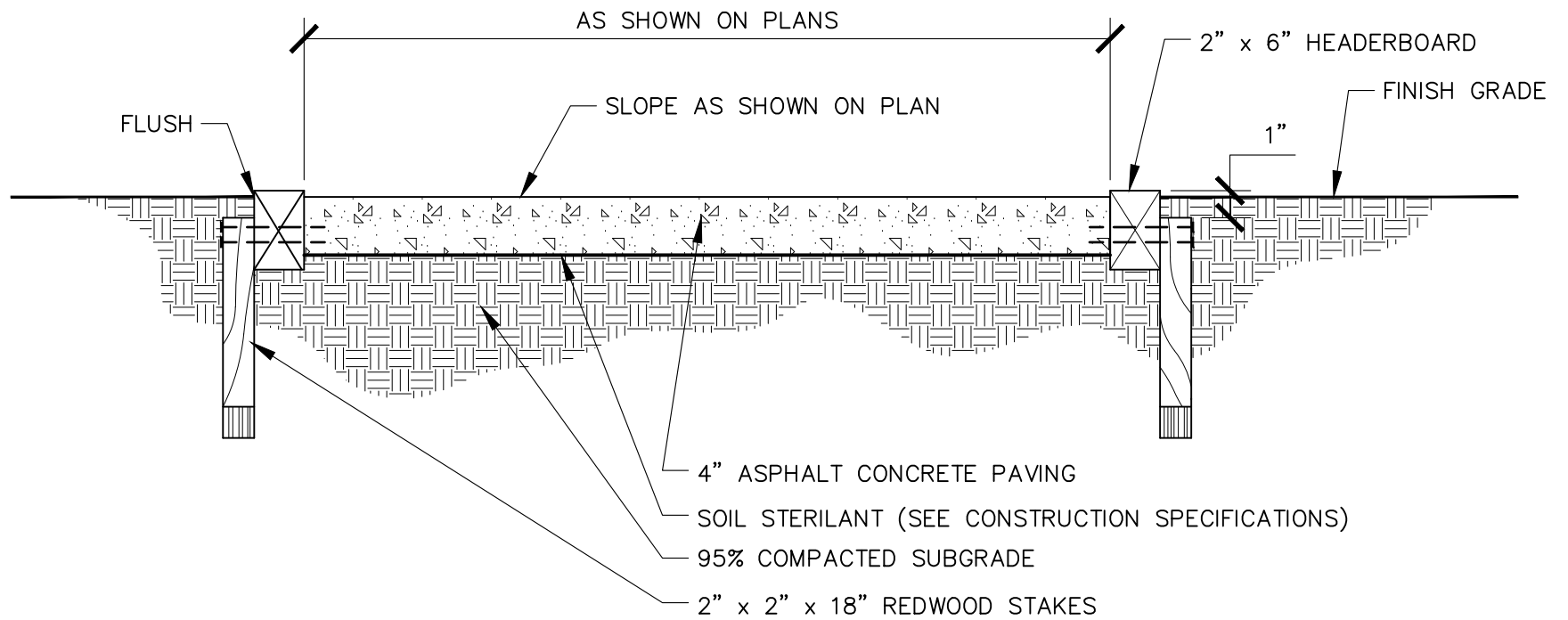
SECURITY LIGHT WITH
CONCRETE COLLAR

NOTES

1. INCLUDE MANUAL BYPASS IN POWER PEDESTAL FOR MANUAL OVERRIDE.
2. ALL LIGHTS TO BE LOCATED ADJACENT TO WALKWAYS.

SCALE: NONE
REVISED: JULY 2025
REVIEWED BY: T. GEE
APPROVED BY: J. GELLER

PK-MI-7



Jill Geller

JILL GELLER, CPRE
PARKS, RECREATION & LIBRARIES DIRECTOR



PARKS, RECREATION, & LIBRARIES
DEPARTMENT

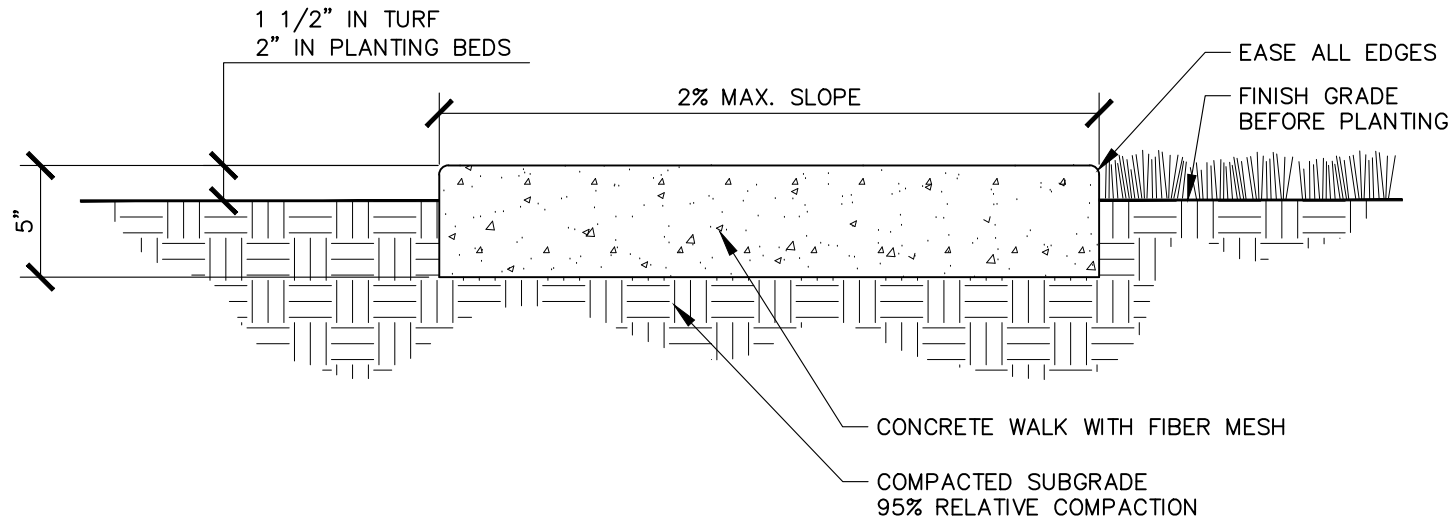
ASPHALT CONCRETE PAVING

SCALE: NONE
REVISED: JULY 2025
REVIEWED BY: T. GEE
APPROVED BY: J. GELLER

PK-PA-1

NOTES

1. HEADER BOARD SHALL BE REDWOOD PER PARKS STANDARD PK-MI-3, ROUGH, CONSTRUCTION HEART GRADE, IN ACCORDANCE TO CALIFORNIA REDWOOD ASSOCIATION GRADING RULES.
2. ALL NAILS SHALL BE GALVANIZED 16 PENNY.
3. TYPE A ASPHALT CONCRETE REQUIRED.



Jill Geller

JILL GELLER, CPRE
PARKS, RECREATION & LIBRARIES DIRECTOR



PARKS, RECREATION, & LIBRARIES
DEPARTMENT

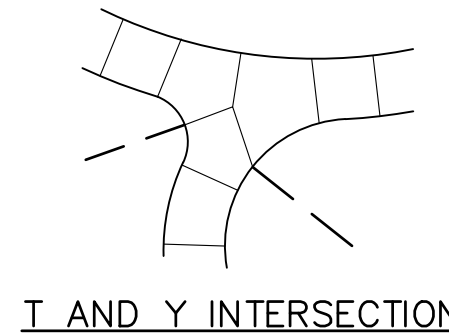
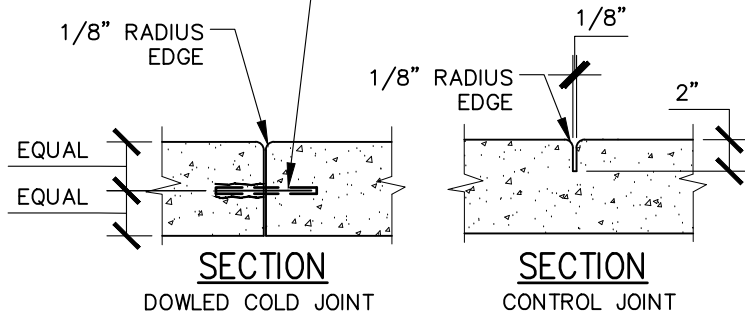
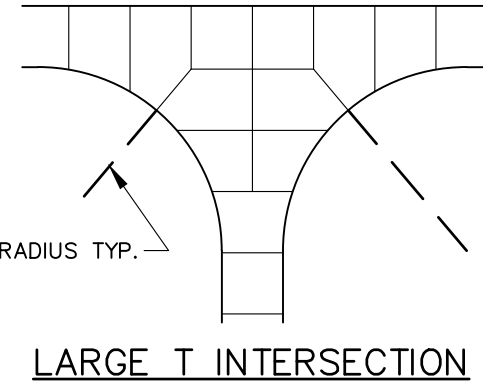
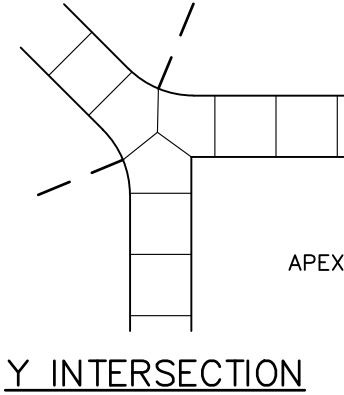
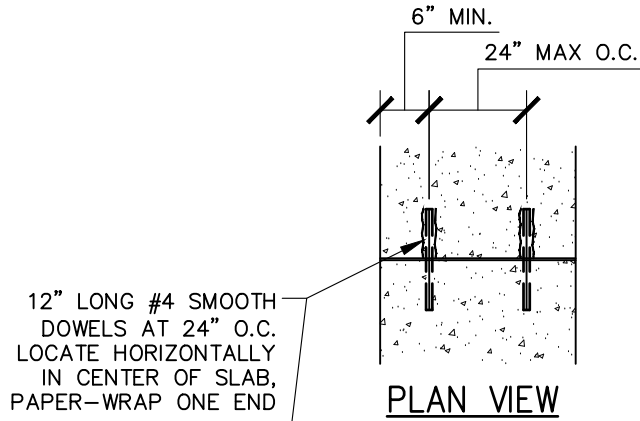
CONCRETE PAVING

SCALE: NONE
REVISED: JULY 2025
REVIEWED BY: T. GEE
APPROVED BY: J. GELLER

PK-PA-2

NOTES

1. PROVIDE CONROL JOINTS 2" DEEP AT INTERVALS THE WIDTH OF THE WALK.
2. MEDIUM BROOM FINISH PERPENDICULAR TO PATH OF TRAVEL UNLESS OTHERWISE SPECIFIED.



Jill Geller

JILL GELLER, CPRE
PARKS, RECREATION & LIBRARIES DIRECTOR

NOTES

1. CONTROL JOINTS SHALL NOT DIVIDE CONCRETE INTO SHAPES CONTAINING AN INTERIOR ANGLE OF 45 DEGREES OR LESS.
2. JOINTS SHALL BE SPACED EQUAL TO THE WIDTH OF THE PATH. EXAMPLE: A 10 FT. WIDE PATH SHALL HAVE JOINTS SPACED AT 10 FT. O.C.
3. EXPANSION JOINTS SHALL BE PLACED WHERE VERTICAL ELEMENTS MEET HORIZONTAL PAVING UNLESS OTHERWISE NOTED ON THE PLANS. THESE ELEMENTS INCLUDE BUT ARE NOT LIMITED TO THE FOLLOWING:
 - PLAY AREA CURB WALLS
 - BUILDINGS
 - SHADE STRUCTURES
 - WALLS
 - VERTICAL PLANTERS

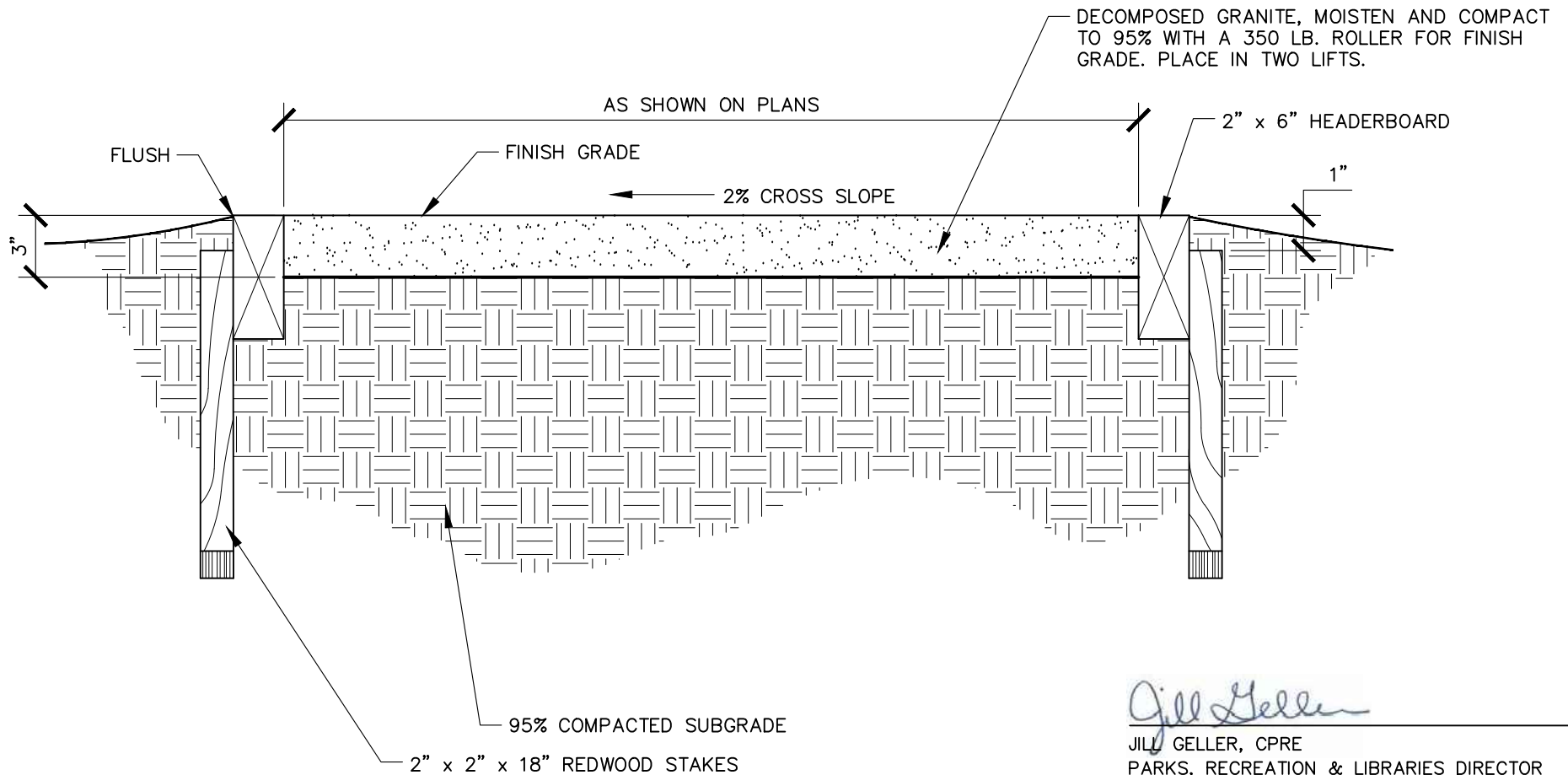


PARKS, RECREATION, & LIBRARIES
DEPARTMENT

CONCRETE JOINTS

SCALE: NONE
REVISED: JULY 2025
REVIEWED BY: T. GEE
APPROVED BY: J. GELLER

PK-PA-3



Jill Geller

JILL GELLER, CPRE
 PARKS, RECREATION & LIBRARIES DIRECTOR



PARKS, RECREATION, & LIBRARIES
 DEPARTMENT

DECOMPOSED GRANITE PAVING

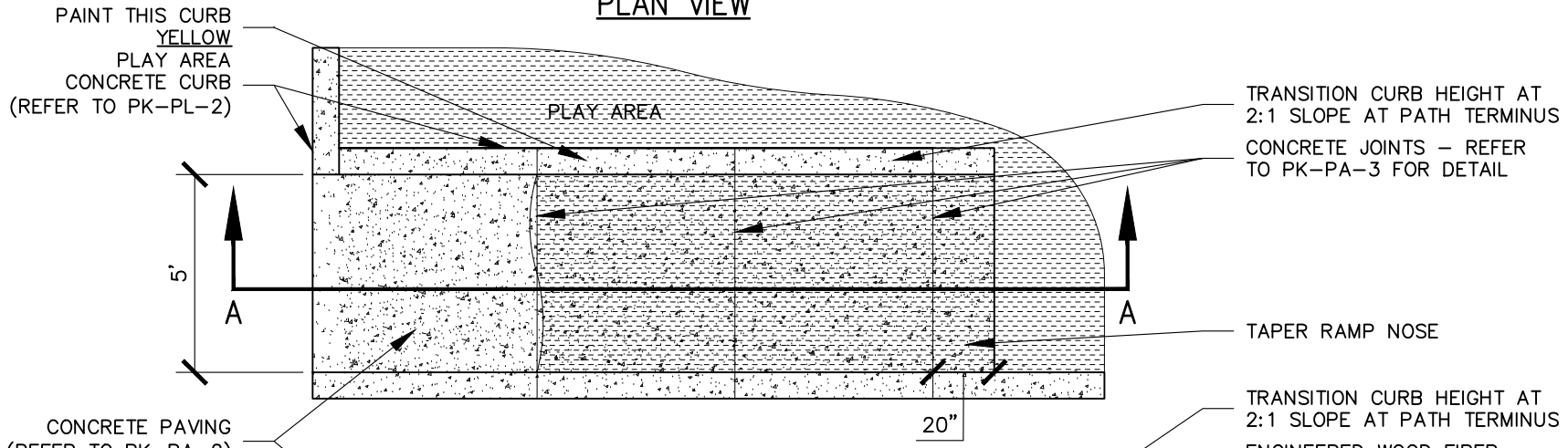
SCALE: NONE
 REVISED: JULY 2025
 REVIEWED BY: T. GEE
 APPROVED BY: J. GELLER

PK-PA-4

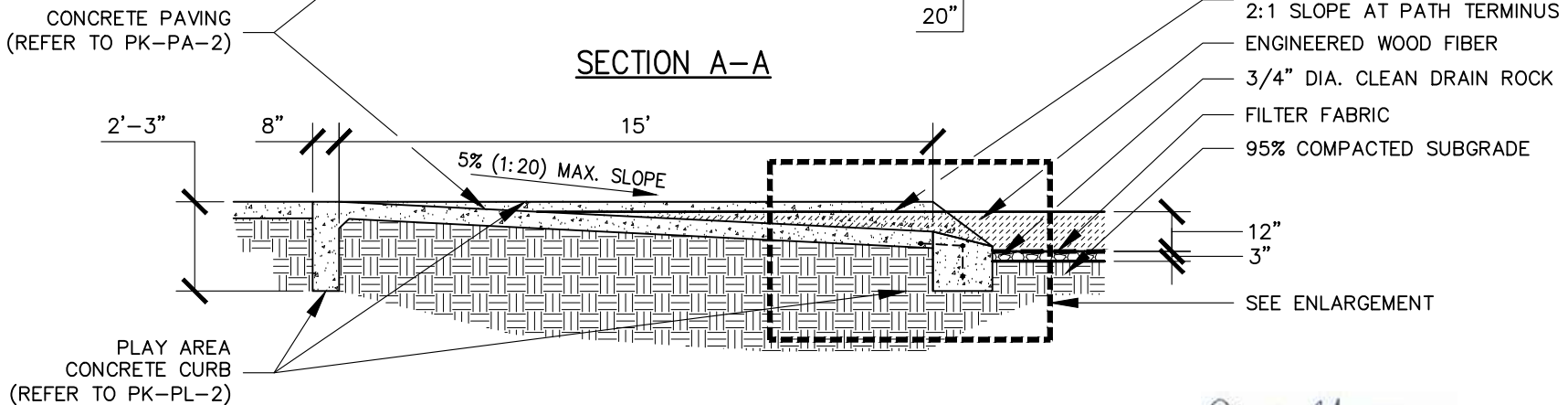
NOTES

- CONTRACTOR TO SUBMIT SAMPLE OF LIGHT TAN OR CALIFORNIA GOLD DECOMPOSED GRANITE FOR APPROVAL BY CITY.

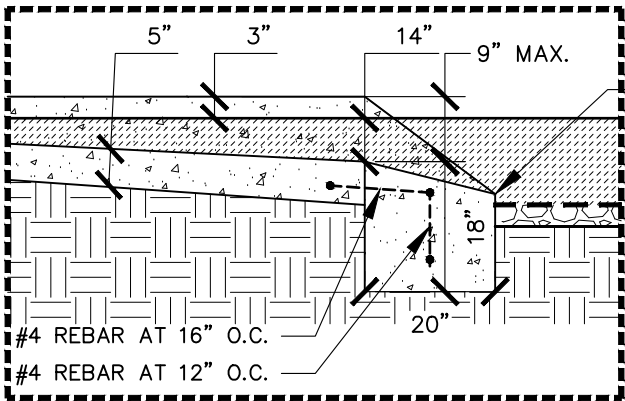
PLAN VIEW



SECTION A-A



ENLARGEMENT



NOTES

1. PAINT TRANSITION CURB YELLOW AS SHOWN
2. TAPER RAMP NOSE AS SHOWN

Jill Geller

JILL GELLER, CPRE
PARKS, RECREATION & LIBRARIES DIRECTOR

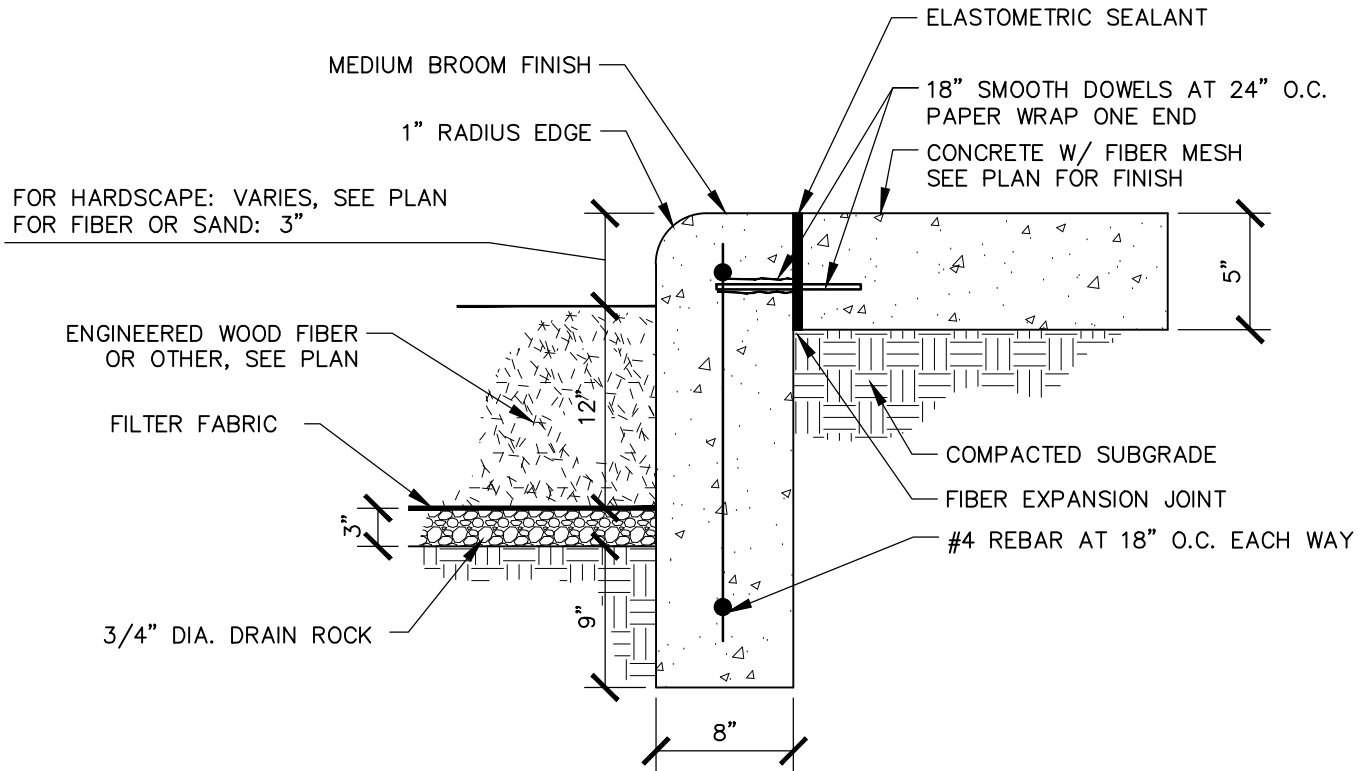


PARKS, RECREATION, & LIBRARIES
DEPARTMENT

**PLAY AREA ACCESS
RAMP A**

SCALE: NONE
REVISED: JULY 2025
REVIEWED BY: T. GEE
APPROVED BY: J. GELLER

PK-PL-1



Jill Geller

JILL GELLER, CPRE
PARKS, RECREATION & LIBRARIES DIRECTOR



PARKS, RECREATION, & LIBRARIES
DEPARTMENT

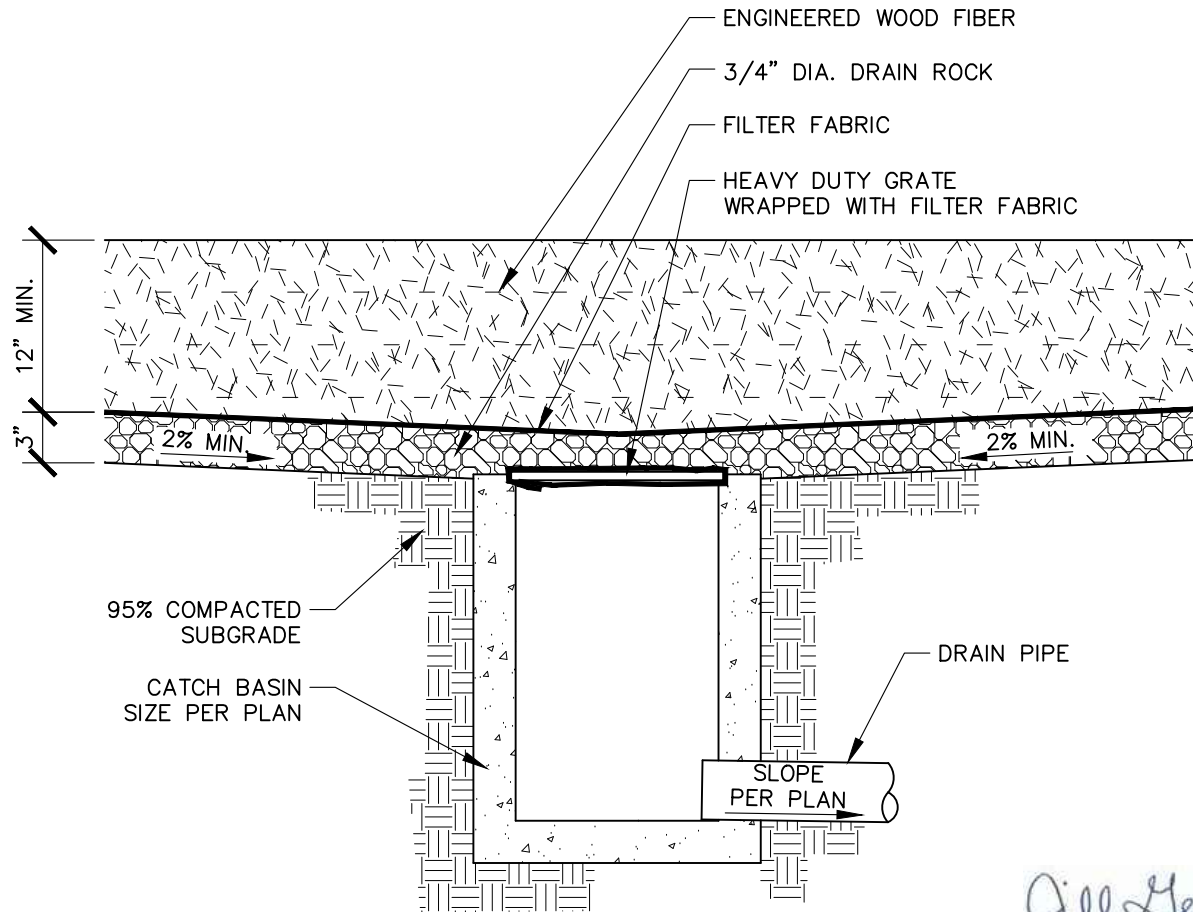
PLAY AREA
CONCRETE CURB

SCALE: NONE
REVISED: JULY 2025
REVIEWED BY: T. GEE
APPROVED BY: J. GELLER

PK-PL-2

NOTES

1. INSTALL TYPE 3 CONCRETE CURB AND CONCRETE PAVING. PROVIDE 18" SMOOTH DOWELS AT 24" O.C.
2. PROVIDE VERTICAL SCORE JOINTS (1" DEEP) AT HORIZONTAL SCORE LINES. ALIGN WITH SIDEWALK.



Jill Geller

JILL GELLER, CPRE
 PARKS, RECREATION & LIBRARIES DIRECTOR

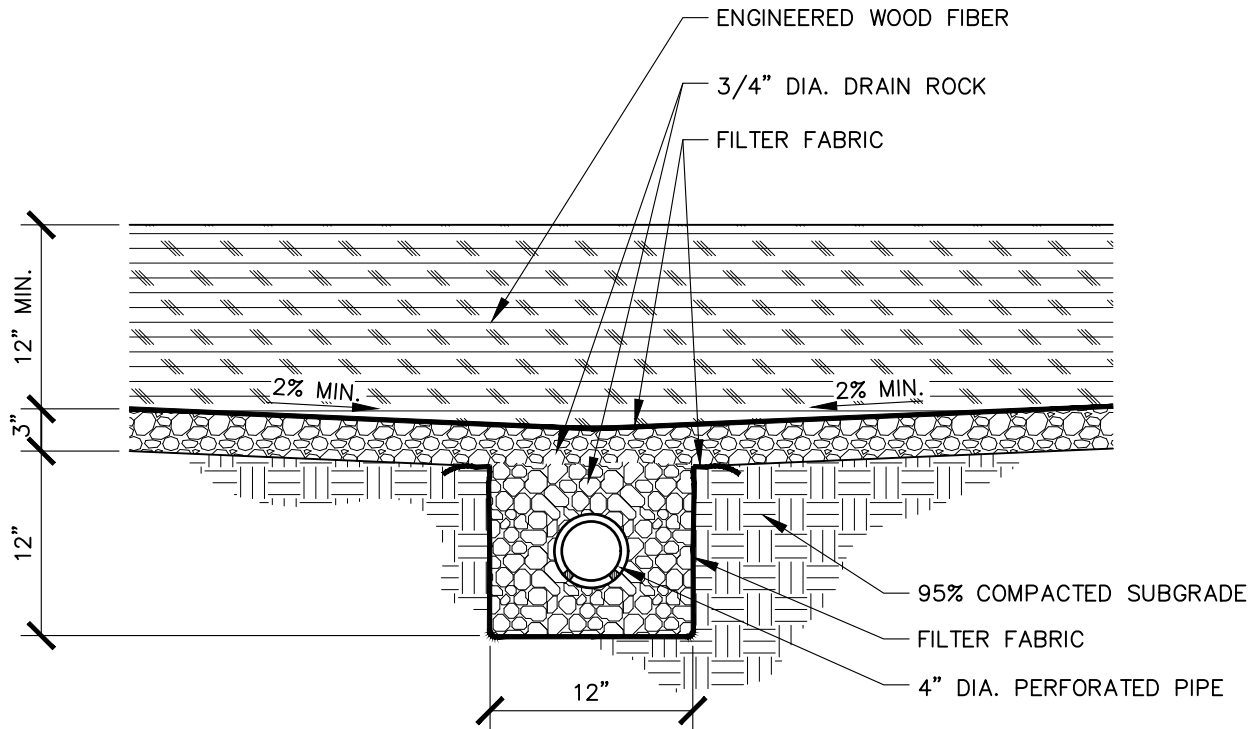


PARKS, RECREATION, & LIBRARIES
 DEPARTMENT

PLAY AREA
 DRAIN

SCALE: NONE
 REVISED: JULY 2025
 REVIEWED BY: T. GEE
 APPROVED BY: J. GELLER

PK-PL-3



Jill Geller

JILL GELLER, CPRE
PARKS, RECREATION & LIBRARIES DIRECTOR



PARKS, RECREATION, & LIBRARIES
DEPARTMENT

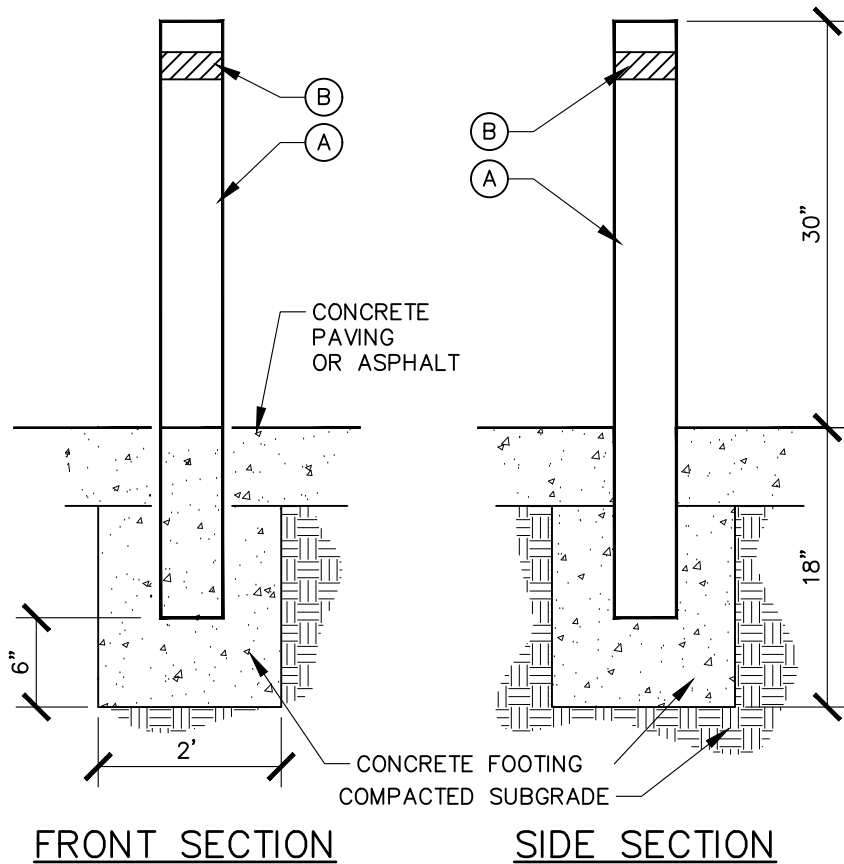
PLAY AREA PERFORATED
PIPE DRAIN

NOTES

1. PERFORATED PIPE SHALL BE LAID IN A HERRINGBONE PATTERN AND CONNECTED TO A DRAIN INLET.
2. LOCATE ALL CLEAN OUTS OUTSIDE PLAY AREA WITHIN PLANTING/TURF AREAS.

SCALE: NONE
REVISED: JULY 2025
REVIEWED BY: T. GEE
APPROVED BY: J. GELLER

PK-PL-4



LEGEND

- A. 3 1/2" O.D. 1/4" WALL STEEL TUBE WITH CAP WELDED ON TOP.
EASE ALL EDGES OF STEEL TUBE.
- B. PLACE 2" WHITE REFLECTIVE TAPE.

Jill Geller

JILL GELLER, CPRE
PARKS, RECREATION & LIBRARIES DIRECTOR



PARKS, RECREATION, & LIBRARIES
DEPARTMENT

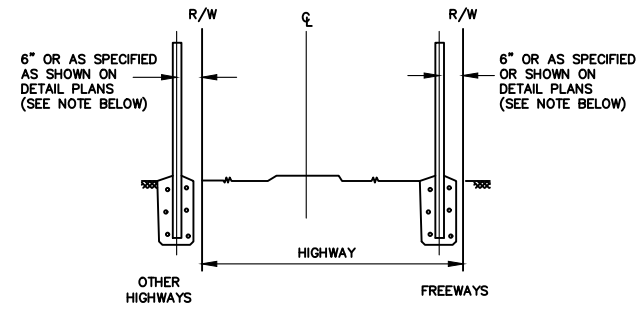
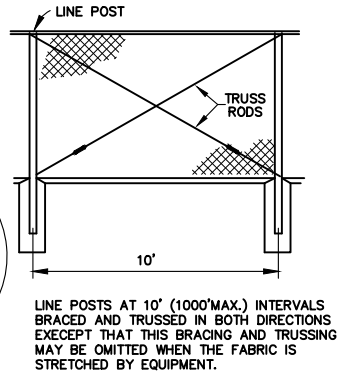
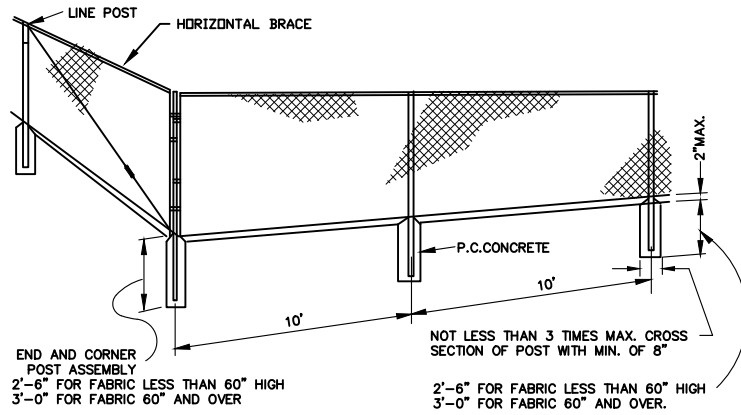
STATIONARY BOLLARD

NOTES

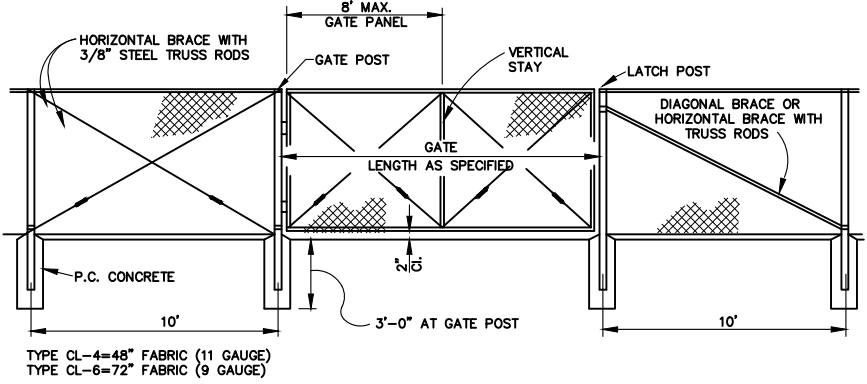
1. ALL TUBING SHALL BE BLACK STEEL PIPE.
2. ALL JOINTS SHALL BE WELDED IN ACCORDANCE WITH CA STATE STANDARD SPECIFICATIONS FOR WELDING STRUCTURAL STEEL AND GROUND SMOOTH.
3. ALL PARTS SHALL BE PAINTED WITH TWO COATS ZINC CHROMATE PRIMER AND TWO COATS EXTERIOR ENAMEL. COLOR: YELLOW

SCALE: NONE
REVISED: JULY 2025
REVIEWED BY: T. GEE
APPROVED BY: J. GELLER

PK-BF-1



FENCE LOCATION



TYPICAL MEMBER DIMENSIONS

FENCE HEIGHT	LINE POSTS			END, LATCH & CORNER POSTS			BRACES				
	ROUND (I.D.)	H	ROLL FORMED	ROUND (I.D.)	ROLL FORMED		ROUND (I.D.)	H	ROLL FORMED		
6' AND LESS	1-1/2"	1-7/8" X 1-5/8"	3/4" X 1-3/4"	2"		3-1/2" X 3-1/2"	2" X 1-3/4"	1-1/4"	1-1/2" X 1-5/16"	1-5/8" X 1-1/4"	1-3/4" X 1-1/4"
OVER 6'	2"	2-1/4" X 2"	2" X 1-3/4"	2-1/2"		3-1/2" X 3-1/2"	2" X 1-3/4"	1-1/4"	1-1/2" X 1-5/16"	1-5/8" X 1-1/4"	1-3/4" X 1-1/4"

NOTES

1. THE ABOVE TABLE SHOWS EXAMPLES OF POST AND BRACE SECTIONS WHICH MAY COMPLY WITH THE SPECIFICATIONS.
2. SECTIONS SHOWN IN THE TABLES MUST ALSO COMPLY WITH THE STRENGTH REQUIREMENTS AND OTHER PROVISIONS OF THE SPECIFICATIONS.
3. OTHER SECTIONS WHICH COMPLY WITH THE STRENGTH REQUIREMENTS AND OTHER PROVISIONS OF THE SPECIFICATIONS MAY BE USED ON APPROVAL OF THE ENGINEER.
4. OPTIONS EXERCISED SHALL BE UNIFORM ON ANY ONE PROJECT.
5. DIMENSIONS SHOWN ARE NOMINAL.

GATE POST

FENCE HEIGHT	GATE WIDTHS	NOMINAL I.D.	WEIGHT PER FOOT	FENCE HEIGHT	GATE WIDTHS	NOMINAL I.D.	WEIGHT PER FOOT
6'-0"	UP THRU 6'	2-1/2"	4.95	OVER 6'	UP THRU 6'	3"	7.58
	OVER 6' THRU 12'	4"	10.79		OVER 6' THRU 12'	5"	14.62
	OVER 12' THRU 18'	5"	14.62		OVER 12' THRU 18'	6"	18.97
AND LESS	OVER 18' TO 24' MAX.	6"	18.97	OVER 18' TO 24' MAX.	8"	28.55	

NOTES

1. ABOVE POST DIMENSIONS AND WEIGHTS ARE MINIMUMS. LARGER SIZES MAY BE USED ON APPROVAL OF ENGINEER.

Jill Geller

JILL GELLER, CPRE
 PARKS, RECREATION & LIBRARIES DIRECTOR

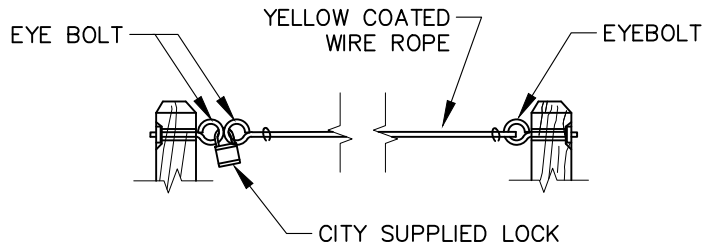
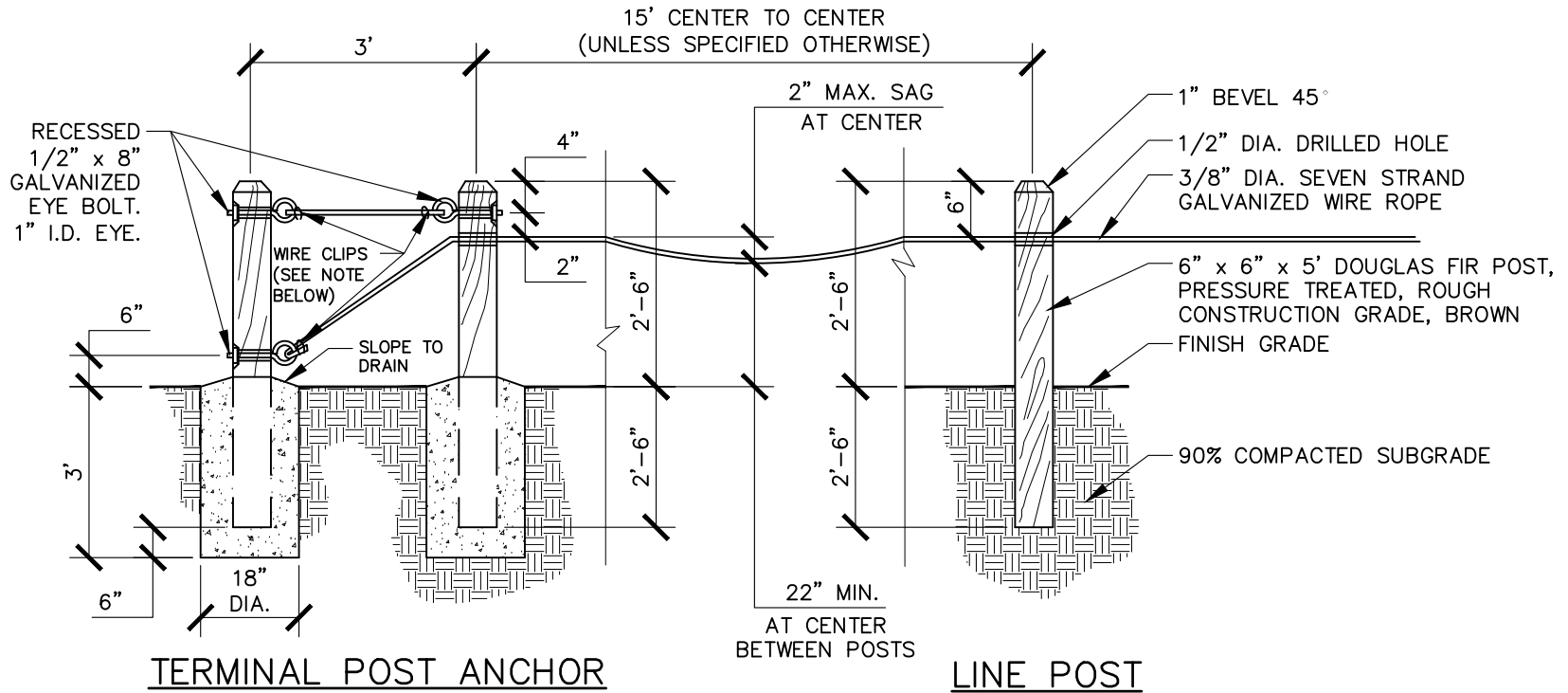


PARKS, RECREATION, & LIBRARIES DEPARTMENT

CHAIN LINK FENCE

SCALE: NONE
 REVISED: JULY 2025
 REVIEWED BY: T. GEE
 APPROVED BY: J. GELLER

PK-BF-2



FIRE ACCESS

Jill Geller

JILL GELLER, CPRE
PARKS, RECREATION & LIBRARIES DIRECTOR



PARKS, RECREATION, & LIBRARIES
DEPARTMENT

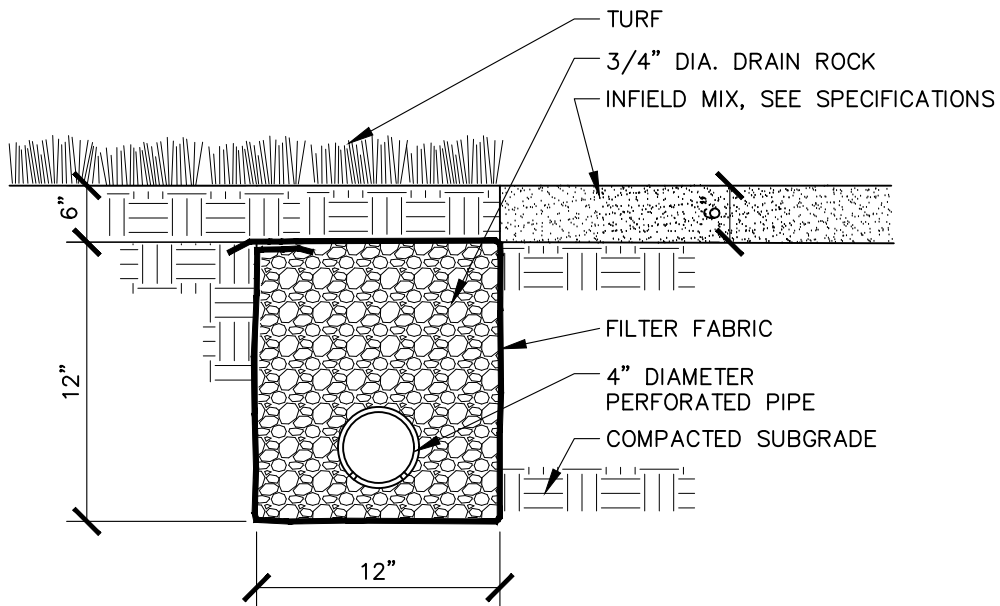
POST AND CABLE FENCE

SCALE: NONE
REVISED: JULY 2025
REVIEWED BY: T. GEE
APPROVED BY: J. GELLER

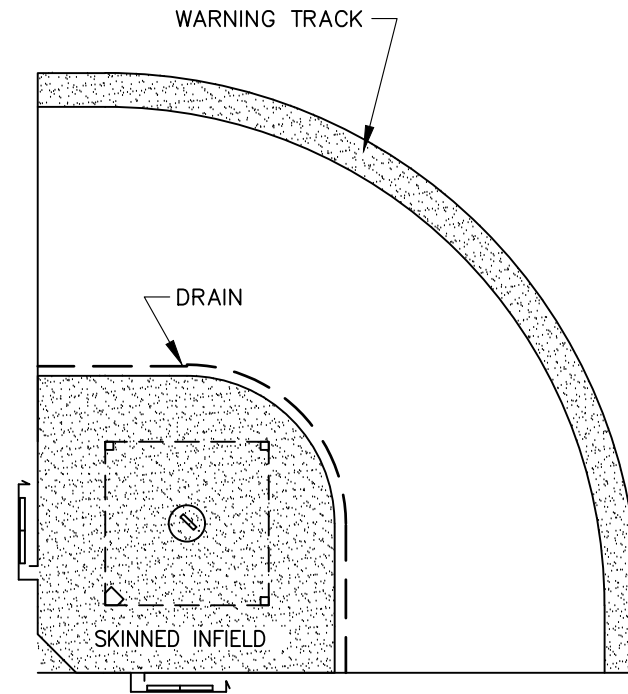
PK-BF-3

NOTES

1. PROVIDE CONCRETE FOOTINGS AT ALL END POSTS, AT ALL BENDS AND AS SPECIFIED ON APPROVED PLANS.
2. USE 3/8" x 2" GALVANIZED WIRE ROPE CLIPS FOR CONNECTIONS AND SPLICES. ALL CLIPS SHALL BE PLACED WITH NUTS FACING DOWNWARD.
3. FOR FIRE ACCESS POINTS, USE YELLOW PVC COATED CABLE.
4. WHERE REQUIRED, USE WHITE PVC COATED CABLE IN LIEU OF GALVANIZED CABLE EXCEPT IN FIRE ACCESS LOCATIONS.
5. DO NOT INSTALL IN TURF AREAS.



SECTION



PLAN

Jill Geller

JILL GELLER, CPRE
 PARKS, RECREATION & LIBRARIES DIRECTOR



PARKS, RECREATION, & LIBRARIES
 DEPARTMENT

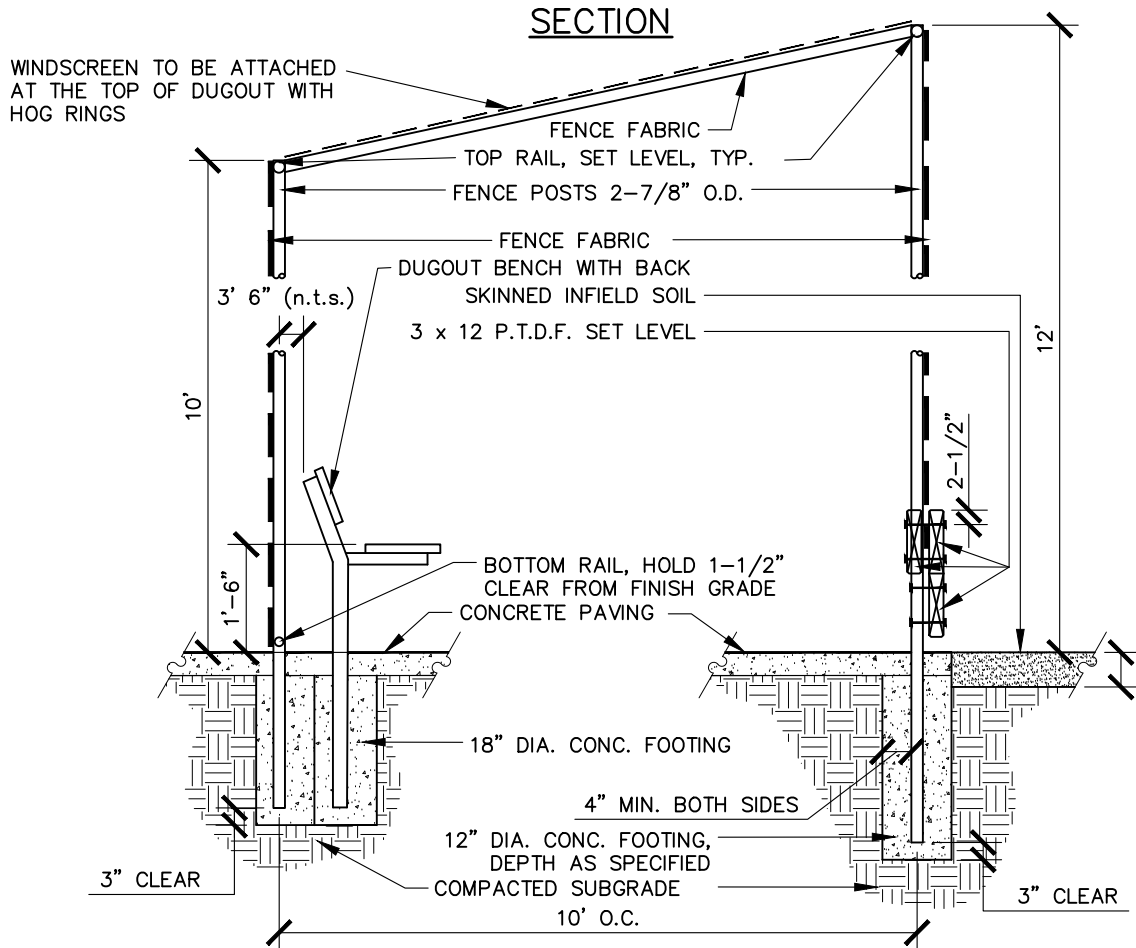
INFELD EDGE DRAIN AND
 WARNING TRACK

SCALE: NONE
 REVISED: JULY 2025
 REVIEWED BY: T. GEE
 APPROVED BY: J. GELLER

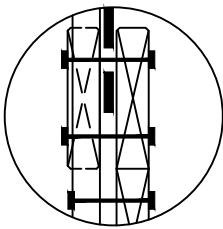
PK-SP-3

NOTES

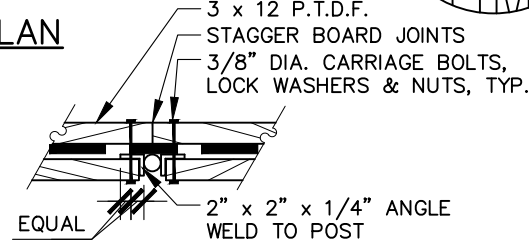
1. INSTALL FILTER FABRIC TO LINE THE ENTIRE TRENCH, INCLUDING THE TOP.
2. CONNECT DRAIN TO STORM DRAIN SYSTEM.
4. 6" MINIMUM DEPTH OF INFELD MIX.



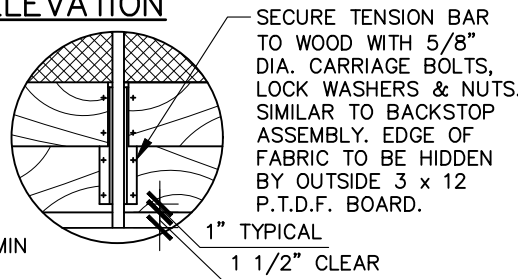
ENLARGEMENT



PLAN



ELEVATION



Jill Geller

JILL GELLER, CPRE
PARKS, RECREATION & LIBRARIES DIRECTOR

	PARKS, RECREATION, & LIBRARIES DEPARTMENT
--	--

SIDELINE FENCE

SCALE: NONE
 REVISED: JULY 2025
 REVIEWED BY: T. GEE
 APPROVED BY: J. GELLER

PK-SP-4

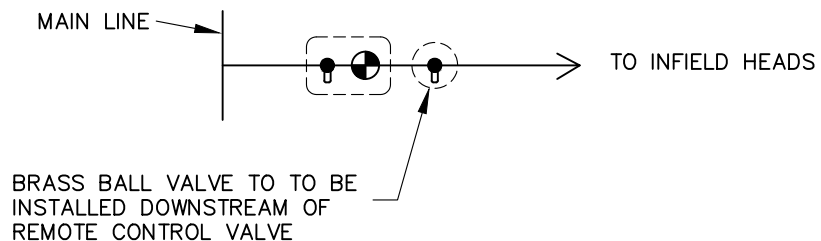
NOTES

1. ALL STEEL AND HARDWARE SHALL BE HOT-DIPPED GALVANIZED.
2. PRIME AND PAINT WOOD WITH KELLY-MOORE PAINT. COLOR TO BE OXFORD BROWN OR WOODLAND FERN.
3. WOOD TO BE PRESSURE TREATED S4S SELECT DOUGLAS FIR (P.T.D.F.)
4. 6" MINIMUM DEPTH OF INFIELD MIX
5. WINDSCREEN TO BE ATTACHED AT THE TOP OF DUGOUT WITH HOG RINGS

LEGEND

- ⊗ QUICK COUPLER
- ▲ 180° POP-UP TURF SPRINKLER – RAINBIRD FALCON 6504 SERIES STAINLESS STEEL HEAD, OR APPROVED EQUAL
- 360° POP-UP TURF SPRINKLER FALCON 6504 SERIES STAINLESS STEEL HEAD
- 4" ROUND VALVE BOX & COVER
- ⊕ REMOTE CONTROL VALVE
- 2" MAXIMUM BRASS BALL VALVE, AT GRADE

CONNECTION ENLARGEMENT AND INFIELD VALVE BOX LAYOUT



Jill Geller

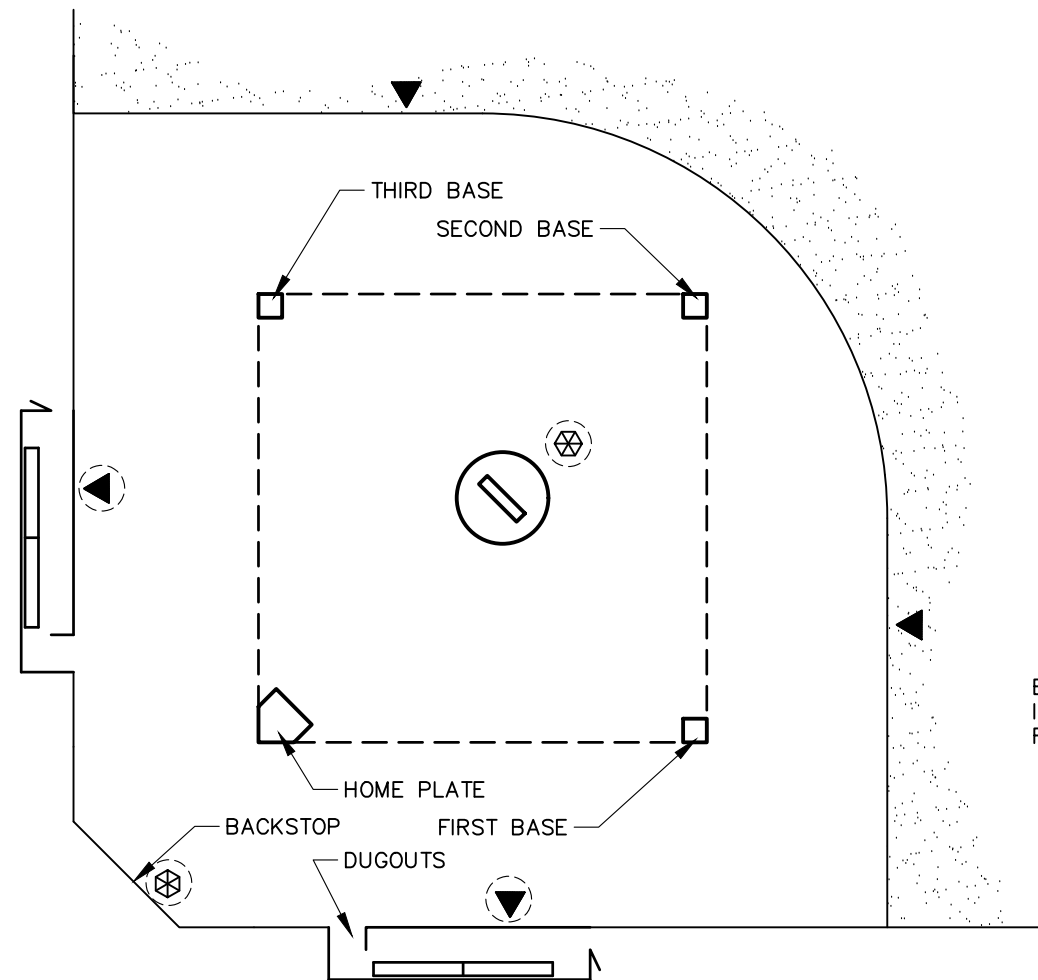
JILL GELLER, CPRE
PARKS, RECREATION & LIBRARIES DIRECTOR

 CITY OF ROSEVILLE CALIFORNIA	PARKS, RECREATION, & LIBRARIES DEPARTMENT
--	--

SKINNED INFIELD IRRIGATION LAYOUT

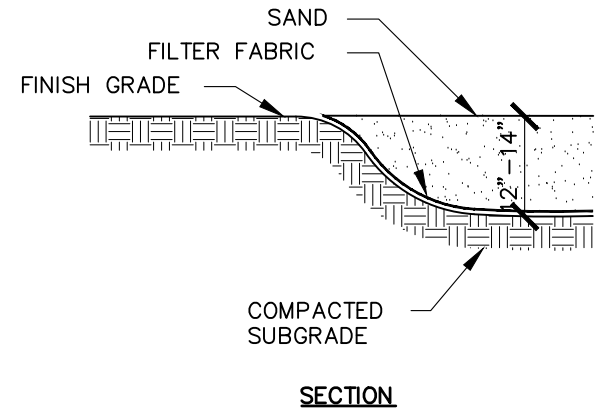
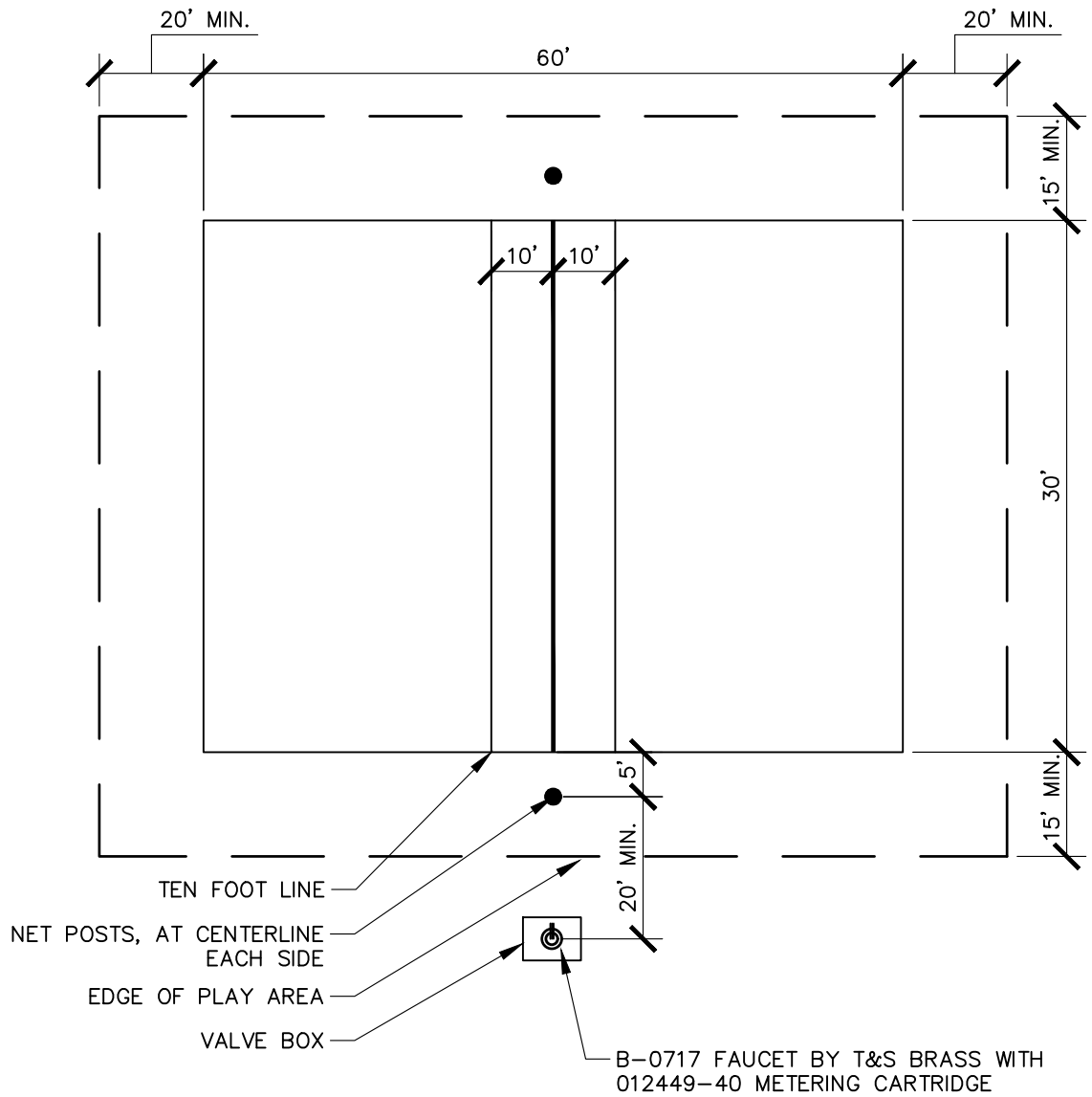
SCALE: NONE
 REVISED: JULY 2025
 REVIEWED BY: T. GEE
 APPROVED BY: J. GELLER

PK-SP-5



NOTES

1. PROVIDE A BRASS MANUAL IRRIGATION ISOLATION VALVE FOR EACH QUICK COUPLER.
2. BACKFILL BOXES CONTAINING SPRINKLER HEADS WITH PEA GRAVEL TO A LEVEL 3" FROM BOTTOM OF LID.
3. TOP OF BOX LIDS TO BE ENGRAVED "INF" FOR INFIELD.



Jill Geller

JILL GELLER, CPRE
PARKS, RECREATION & LIBRARIES DIRECTOR



PARKS, RECREATION, & LIBRARIES
DEPARTMENT

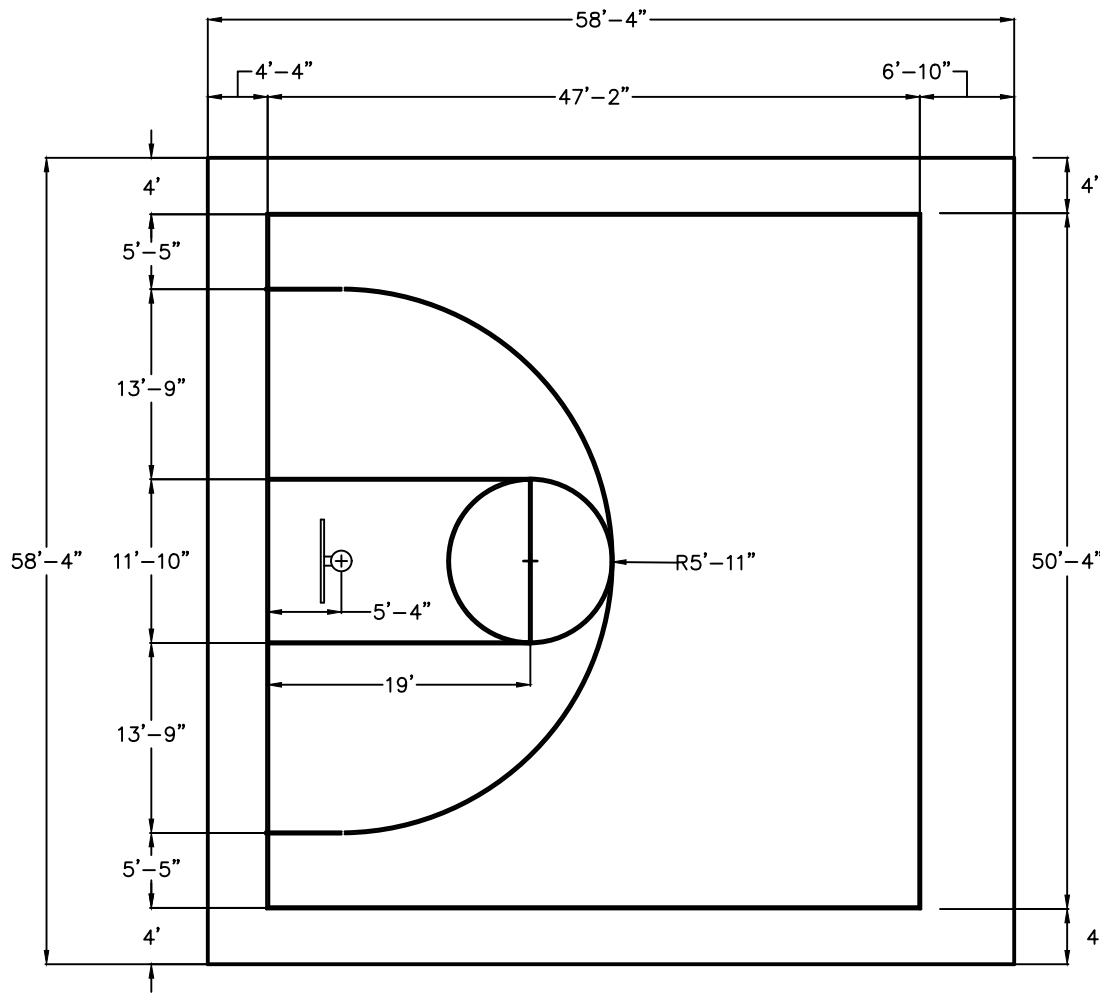
VOLLEYBALL COURT LAYOUT

SCALE: NONE
REVISED: JULY 2025
REVIEWED BY: T. GEE
APPROVED BY: J. GELLER

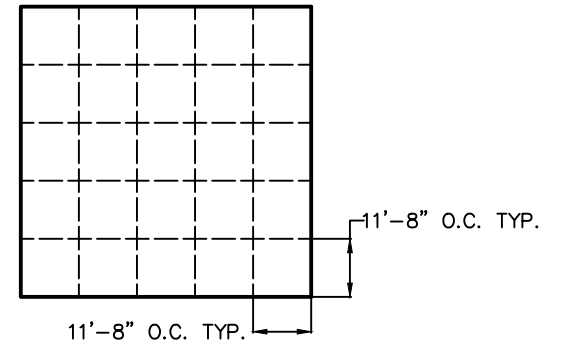
PK-SP-6

NOTES

1. FINISH GRADE OF SAND SHALL BE FLUSH WITH FINISH GRADE OF ADJACENT AREA.
2. DO NOT INSTALL IRRIGATIONS HEADS IN SAND AREA.



LAYOUT



CONTROL JOINT LAYOUT

Jill Geller

JILL GELLER, CPRE
PARKS, RECREATION & LIBRARIES DIRECTOR



PARKS, RECREATION, & LIBRARIES
DEPARTMENT

BASKETBALL COURT HALF
COURT LAYOUT

SCALE: NONE
REVISED: JULY 2025
REVIEWED BY: T. GEE
APPROVED BY: J. GELLER

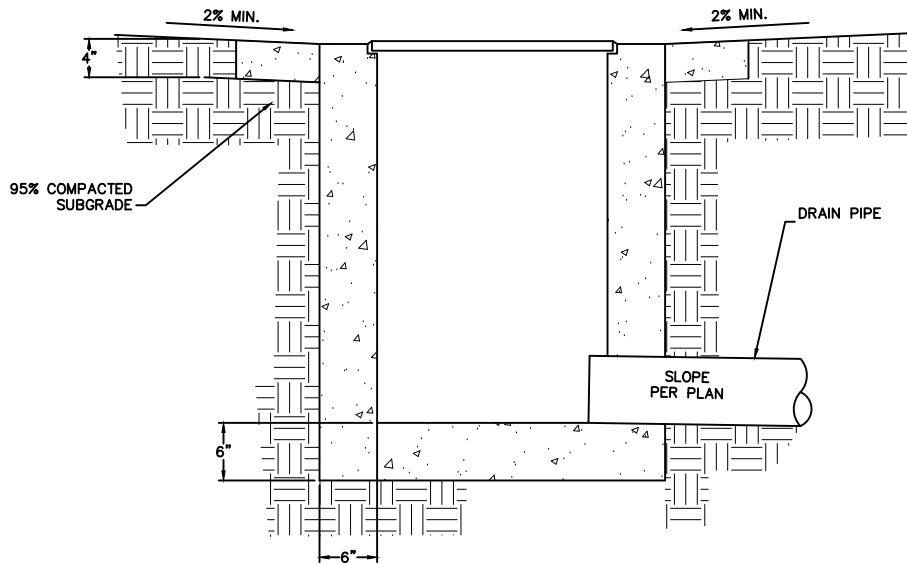
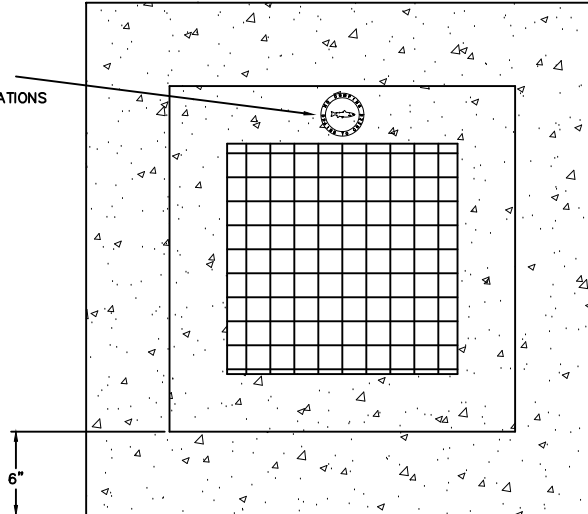
PK-SP-7

NOTES

1. STRIPING WIDTH - 2"
2. STRIPING DIMENSIONS MEASURED FROM CENTER OF STRIPE.

PLAN VIEW

FISH STAMP — REFER TO
DEVELOPMENTAL SERVICES
STANDARDS AND SPECIFICATIONS



SECTION

JILL GELLER, CPRE
PARKS, RECREATION & LIBRARIES DIRECTOR



PARKS, RECREATION, & LIBRARIES
DEPARTMENT

**DRAIN INLET IN
TURF AREAS**

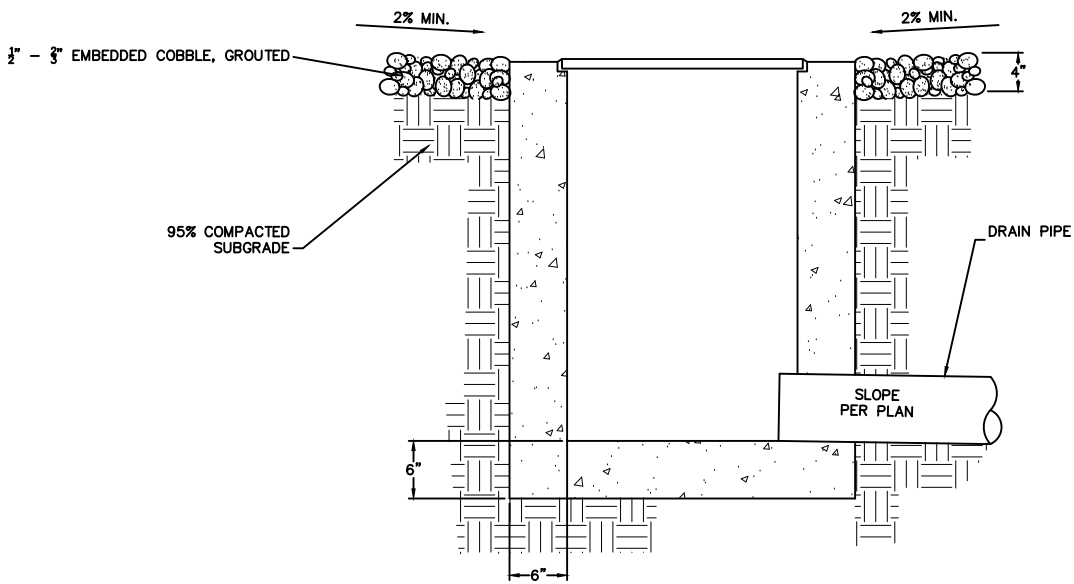
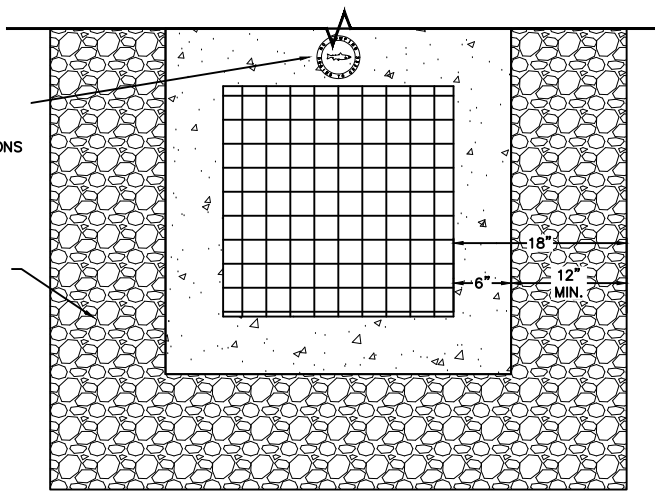
SCALE: NONE
REVISED: JULY 2025
REVIEWED BY: T. GEE
APPROVED BY: J. GELLER

PK-DR-1

PLAN VIEW

FISH STAMP — REFER TO DEVELOPMENT SERVICES STANDARDS AND SPECIFICATIONS

3" - 6" DIAMETER COBBLE SURFACING SHALL BE GROUTED PER PARKS SPECIFICATIONS



SECTION

Jill Geller

JILL GELLER, CPRE
PARKS, RECREATION & LIBRARIES DIRECTOR



PARKS, RECREATION, & LIBRARIES DEPARTMENT

DRAIN INLETS IN LANDSCAPE AREAS

SCALE: NONE
REVISED: JULY 2025
REVIEWED BY: T. GEE
APPROVED BY: J. GELLER

PK-DR-2